

Annual
Fact Book
2003 - 2004

**Fayetteville State University
Office of Institutional Research**



Preface

This is the current edition of the Fayetteville State University Fact Book. It presents Fall 2003 and Spring 2004 data and statistics about the university. The data presented are extracted from Student Data Files, Personnel Data Files and selected NCHED and IPEDS reports. An electronic version of the publication is available to the general public via the World Wide Web. It can be accessed through the university's home page or directly at www.uncfsu.edu/ir/. We encourage the use of the electronic version to reduce costs associated with the publication.

Special acknowledgments go to Ms. Teresa Covington, Applications Programmer, and Mr. Andrew English, Research Associate, for their outstanding work on this project.

Brenda Freeman, Director
Institutional Research

TABLE OF CONTENTS

General Information

Preface	1
Mission Statement, Philosophy and Values	2
Board of Trustees and Administrative Officers	3
History of Fayetteville State University	6
University of North Carolina Board of Governors	9
History of the University of North Carolina	10
Institutional Memberships, Accreditation, Centers and Special Programs	12
Administrative Organizational Chart	13
Executive Dashboard 1999-2003	14
Academic Program Inventory	15

Students

Narrative Summary of Student Data	18
First Time Freshman Applications by Gender	20
By Age	21
By Residency	22
By Race	23
By SAT Verbal Scores	24
By SAT Math Scores	25
By SAT Combined Score	26
By High School GPA	27
By Class Rank Quintiles	28
By Class Rank Quartiles	29
By Graduation Status Previous Year and Residence	30
By (Not) Graduation Status Previous Year and Residence	31
First Time Freshmen Enrolled by Gender and Age	32
Residency and Race	33
By SAT Verbal and Math Scores	34
By SAT Combined Score and High School GPA	35
By Class Rank in Quintiles and Quartiles	36

Enrolled Students by Gender and Age	37
Residency and Race	38
By Enrolled Status and Citizenship	39
By Teacher Certification and Degree Intent	40
By Housing Code and Resident Credit Hours	41
By Resident Credit, Extension, and Transfer Hours	42
By Class Level and Major Fall 2003	43
By Class Level and Major Spring 2004	44
Graduate Student by Major Fall 2003 & Spring 2004	45
Degrees Conferred 2001-2004 Comparison by Levels and Double Major	46
By Semester and Residency.....	47
By Race and Gender	48
By Citizenship and Teacher Certification.....	49
By County and State of Residency and Degree Level.....	50
By Retention, Graduation, and Persistence Rates.....	52
Faculty and Staff	
Narrative Summary of Faculty and Staff Data	54
Full-Time Instructional Faculty (Fall 2003) By Citizenship	55
By Rank.....	56
By Degrees	57
By Ethnicity	58
By Tenure.....	59
By Average Salary	60
Employees (Fall 2003) By Ethnicity	61
By Gender	62
By Status	63
By Classification.....	64
Finances	
Narrative Summary of Financial Data	66
Student Financial Aid by Aid Type (2002-2003)	67
Student Financial Aid by Type and Level (2002-2003)	68
Estimated Tuition and Fee Schedule (2003-2004).....	69
IPEDS Finance Survey (Fiscal Year 2003)	71

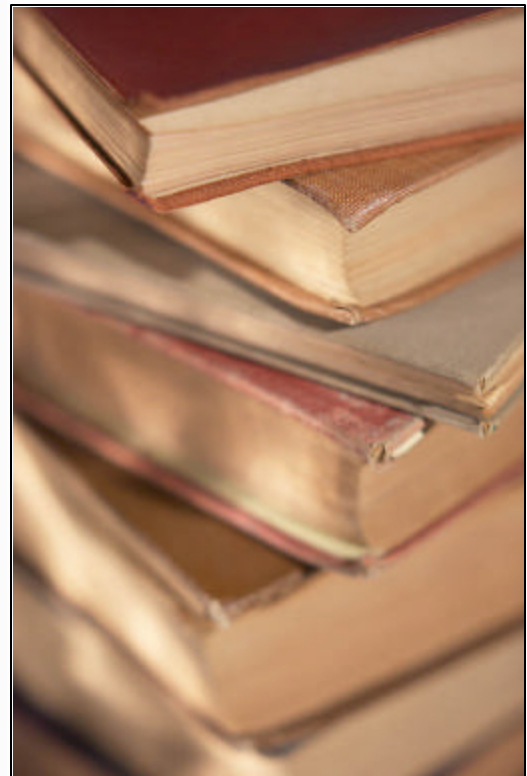
Facilities

Narrative Summary of Facilities Data	73
Facilities Inventory	74
Construction Projects	75

General Information

Institutional Profile

Established:	1967
Control:	State
Highest Degree Offering:	Doctorate
Accreditation:	Southern Association of Colleges and Schools
FICE:	002928
Level:	Comprehensive I
School Motto:	Res Non Verba “Deeds not Words”
School Colors:	White & Blue
School Song:	“ <i>Old White and Blue</i> ” by Mary T. Eldridge
School Mascot:	Bronco
Congressional District:	7th
County of Location:	Cumberland
County Population:	308,000
Military Installations:	Fort Bragg Pope Air Force Base
Transportation:	Fayetteville Regional Airport Amtrak Rail System Greyhound Bus Lines



General Information

Statement of Educational Mission



Fayetteville State University is a regional public comprehensive university, offering degrees at the baccalaureate and master's levels and a doctorate in Educational Leadership. The primary mission of Fayetteville State University is to provide high-quality education to its students at the undergraduate level through a basic liberal arts foundation and major programs in the arts and sciences, teacher education, and business and economics as well as specific graduate programs. Committed to excellence in teaching, research, and service to the community, the university seeks to prepare its students and graduates to lead meaningful and productive lives. In doing so, Fayetteville State University strives to produce creative thinkers and leaders who will reach beyond current intellectual and cultural boundaries to become change agents for shaping the future of the nation and the world.

As a part of its broader mission, the university extends its services as a regional institution by providing life-long learning experiences and opportunities to the University's immediate and extended communities and serving as a resource for business, education, and culture in North Carolina.

Philosophy and Values

Fayetteville State University is committed to educating students in the liberal arts tradition and to the belief that the intellectual life of the student is to be cultivated for the good of the individual and humankind. The university embraces the philosophical and educational beliefs that a strong liberal arts education should foster in students the independence of mind, clarity of thought, and depth of spiritual vision that will inspire them to contribute integrally to the good of society and the quality of life for all of humankind.

In keeping with these beliefs, Fayetteville State University strives to prepare students to think critically, to appreciate the arts, to express themselves creatively, and to make independent and rational judgments. The university also endeavors to cultivate in students a respect for the earth and its peoples, engendering in them both an appreciation of the diverse cultures around the globe and a sense of responsibility for preserving the earth and its treasures.

Through disciplined scholarship and creativity, students are prepared to compete in and contribute to both the artistic world and the world of the marketplace while maintaining high standards in their personal and professional lives. In short, Fayetteville State University aspires to cultivate intellectual growth and excellence of scholarship, inculcating in students a love of truth, of beauty, and of goodness to attune them to a lifelong pursuit of the ideals of learning, of humane values, and of selfless service to humankind.

Administration

Board of Trustees

Mr. James T. Burch, Chair
Mr. T. Michael Todd, Vice Chair
Mr. Larry Tinney, Secretary
Dr. Major M. Boyd
Mr. John B. Brown, Jr.
Dr. Franklin S. Clark
Dr. John D. Fuller, Sr.
Mr. Nathan T. Garrett
Mr. Glenn R. Jernigan
Ms. Gloria Moore
Mr. Stephen W. Raper
Ms. Sharlene R. Williams
Ms. Shari Williams
(Ex Officio -SGA President)

Administrative Officers

T. J. Bryan, B.A., M.A., Ph.D.
Chancellor
Marion Gillis-Olion, B.A., M.A., Ph.D.
Provost and Vice Chancellor for Academic Affairs
Bobby Matthews, B.S., B.A., C.P.A.
Vice Chancellor for Business and Finance
Charles Waddell, B.S., M.B.A.
Vice Chancellor for University Advancement
and Development
Olivia Chavis, B.S., M.Ed.
Vice Chancellor for Student Affairs
Wanda D. Jenkins, B.B.A., M.B.A., J.D.
University Legal Counsel / Chief of Staff
Valentine James, B.S., M.A., Ph.D.
Dean, College of Humanities and Social Sciences
Juliette Bell, B.A., Ph.D.
Dean, College of Basic and Applied Sciences
Joseph Johnson, B.S., M.Ed., Ed.D.
Dean, School of Education
Charles H. Davis, B.S., M.B.A., D.B.A.
Dean, School of Business and Economics

Administrators and Department Chairs

David Allen

Associate Vice Chancellor for Academic Programs, Planning and Assessment

Carrol Arnold

Assistant Vice Chancellor for Academic Affairs – Honors Program

Wanda Coneal

Executive Assistant to the Chancellor

Juanette Council

Assistant Vice Chancellor for Student Affairs

Leonard Covington

Assistant Vice Chancellor for Human Resources and Payroll

Stanley Douglas

Associate Vice Chancellor for Facilities Management

Nick Ganesan

Associate Vice Chancellor for Information Technology and Telecommunications Services

Latonya Hankins

Associate Vice Chancellor for Business Finance

Warren McDonald

Special Assistant to the Chancellor for Military Relations, Distant and Extended Learning

Norma McLaughlin

Associate Vice Chancellor for Student Affairs and Director of Student Advisement

Angela Moore

Assistant Vice Chancellor for University Development

Jon Young

Associate Vice Chancellor for Enrollment Management

Joe Alston

Director of Business Services

Hattie B. Bazemore

Director of Teacher Education

Major Boyd

Athletic Director

Kelvin Coaxum

Director Fort Bragg and Pope Air Force Base Center

Carolyn Dunston

Director of Alumni Affairs

Brenda Freeman

Director of Institutional Research

Patricia Heath

Director University Testing

Carol Cotman Hogan

Director of Admissions

Dorothy Holmes

Executive Director of Special Programs

Barbara Jones

Director of Extended Learning

Lois McKoy

Director of Financial Aid

Terry Merritt

Bursar/Treasurer

Ben Minter

Director of Marketing and Events

Jerry Monroe

Chief of Police and Public Safety

Greg Moyd

Director of Student Life and Housing

Inder Nijhawan

Director of the Center for Economic Education

Floyd Shorter

Director of Business Center

Sarah Thomas

Registrar

Darrell Vickers

Director of Fayetteville State University at Seymour Johnson Air Force Base

Jeffery Womble

Director of Public Relations

Beverly Warren

Director of Sponsored Program

Bobby Wynn

Director Library Services

Samuel Adu-Mireku

Chair, Department of Sociology

David Barlow

Chair, Department of Criminal Justice

Matthew Bowman

Director of Early Childhood Learning
Center

John Brooks III

Director of University College

Jeffrey Cassisi

Chair, Department of Psychology

Evangeline Cheeks

Chair, Department of Aerospace Studies

Marvin Curtis

Chair, Department of Performing and
Fine Arts

Rama Datta

Chair, Department of Government and
History

Clararene Glover

Director of Math/Science Education
Center

Vanere Goodwin

Chair, Department of Math/Computer
Science

Mary Grimes

Director Teaching and Learning Center

Carolyn Jewell

Chair, Department of Marketing and
Business Education

Ruth Johnson

Nursing Program Coordinator

Helen Jones

Chair, Department of Educational
Leadership

Petur Jonsson

Chair, Department of Managerial
Economics and Finance

Alireza Lari

Chair, Department of Management

Ernest McNeill

Chair, Department of Middle Grades,
Secondary and Special Education

Frank Merchant

Chair, Department of Health, P.E., and
Human Services

Terri Moore Brown

Chair, Department of Social Work

Murthy Pinapaka

Chair, Department of Natural Sciences

Sandra Shorter

Chair, Department of Elementary
Education

Assad Tavakoli

Director of the MBA Program

Ulysses Taylor

Chair, Department of Accounting

Peter Valenti

Chair, Department of English and
Foreign Languages

Administration

Board of Trustees

Mr. James T. Burch, Chair
Mr. T. Michael Todd, Vice Chair
Mr. Larry Tinney, Secretary
Dr. Major M. Boyd
Mr. John B. Brown, Jr.
Dr. Franklin S. Clark
Dr. John D. Fuller, Sr.
Mr. Nathan T. Garrett
Mr. Glenn R. Jernigan
Ms. Gloria Moore
Mr. Stephen W. Raper
Ms. Sharlene R. Williams
Ms. Shari Williams
(Ex Officio -SGA President)

Administrative Officers

T. J. Bryan, B.A., M.A., Ph.D.
Chancellor
Marion Gillis-Olion, B.A., M.A., Ph.D.
Provost and Vice Chancellor for Academic Affairs
Bobby Matthews, B.S., B.A., C.P.A.
Vice Chancellor for Business and Finance
Charles Waddell, B.S., M.B.A.
Vice Chancellor for University Advancement
and Development
Olivia Chavis, B.S., M.Ed.
Vice Chancellor for Student Affairs
Wanda D. Jenkins, B.B.A., M.B.A., J.D.
University Legal Counsel / Chief of Staff
Valentine James, B.S., M.A., Ph.D.
Dean, College of Humanities and Social Sciences
Juliette Bell, B.A., Ph.D.
Dean, College of Basic and Applied Sciences
Joseph Johnson, B.S., M.Ed., Ed.D.
Dean, School of Education
Charles H. Davis, B.S., M.B.A., D.B.A.
Dean, School of Business and Economics

Administrators and Department Chairs

David Allen

Associate Vice Chancellor for Academic Programs, Planning and Assessment

Carrol Arnold

Assistant Vice Chancellor for Academic Affairs – Honors Program

Wanda Coneal

Executive Assistant to the Chancellor

Juanette Council

Assistant Vice Chancellor for Student Affairs

Leonard Covington

Assistant Vice Chancellor for Human Resources and Payroll

Stanley Douglas

Associate Vice Chancellor for Facilities Management

Nick Ganesan

Associate Vice Chancellor for Information Technology and Telecommunications Services

Latonya Hankins

Associate Vice Chancellor for Business Finance

Warren McDonald

Special Assistant to the Chancellor for Military Relations, Distant and Extended Learning

Norma McLaughlin

Associate Vice Chancellor for Student Affairs and Director of Student Advisement

Angela Moore

Assistant Vice Chancellor for University Development

Jon Young

Associate Vice Chancellor for Enrollment Management

Joe Alston

Director of Business Services

Hattie B. Bazemore

Director of Teacher Education

Major Boyd

Athletic Director

Kelvin Coaxum

Director Fort Bragg and Pope Air Force Base Center

Carolyn Dunston

Director of Alumni Affairs

Brenda Freeman

Director of Institutional Research

Patricia Heath

Director University Testing

Carol Cotman Hogan

Director of Admissions

Dorothy Holmes

Executive Director of Special Programs

Barbara Jones

Director of Extended Learning

Lois McKoy

Director of Financial Aid

Terry Merritt

Bursar/Treasurer

Ben Minter

Director of Marketing and Events

Jerry Monroe

Chief of Police and Public Safety

Greg Moyd

Director of Student Life and Housing

Inder Nijhawan

Director of the Center for Economic Education

Floyd Shorter

Director of Business Center

Sarah Thomas

Registrar

Darrell Vickers

Director of Fayetteville State University at Seymour Johnson Air Force Base

Jeffery Womble

Director of Public Relations

Beverly Warren

Director of Sponsored Program

Bobby Wynn

Director Library Services

Samuel Adu-Mireku

Chair, Department of Sociology

David Barlow

Chair, Department of Criminal Justice

Matthew Bowman

Director of Early Childhood Learning
Center

John Brooks III

Director of University College

Jeffrey Cassisi

Chair, Department of Psychology

Evangeline Cheeks

Chair, Department of Aerospace Studies

Marvin Curtis

Chair, Department of Performing and
Fine Arts

Rama Datta

Chair, Department of Government and
History

Clararene Glover

Director of Math/Science Education
Center

Vanere Goodwin

Chair, Department of Math/Computer
Science

Mary Grimes

Director Teaching and Learning Center

Carolyn Jewell

Chair, Department of Marketing and
Business Education

Ruth Johnson

Nursing Program Coordinator

Helen Jones

Chair, Department of Educational
Leadership

Petur Jonsson

Chair, Department of Managerial
Economics and Finance

Alireza Lari

Chair, Department of Management

Ernest McNeill

Chair, Department of Middle Grades,
Secondary and Special Education

Frank Merchant

Chair, Department of Health, P.E., and
Human Services

Terri Moore Brown

Chair, Department of Social Work

Murthy Pinapaka

Chair, Department of Natural Sciences

Sandra Shorter

Chair, Department of Elementary
Education

Assad Tavakoli

Director of the MBA Program

Ulysses Taylor

Chair, Department of Accounting

Peter Valenti

Chair, Department of English and
Foreign Languages

History

When the Civil War ended in 1865, an education agenda in Fayetteville's Black community was already underway. A year after the Civil War ended, the Phillips School provided primary education to Fayetteville's black citizens, and the Sumner School provided intermediate education. The two schools were consolidated in 1869 and dedicated in April of that year as the Howard School, in honor of the Freedman's Bureau chief General O. O. Howard. Seven prominent African-American men—Mathew N. Leary, A. J. Chesnutt, Robert Simmons, George Grainger, Thomas Lomax, Nelson Carter, and David A. Bryant - pooled \$136 to purchase two lots for the first building that housed the Howard School.

African-American students at the Phillips and Sumner schools were taught fundamentals—reading, writing, arithmetic, and practical skills. Building on the curriculum, the leadership of the Howard School added geography and science classes, the latter after its first telescope was acquired. Even then, the community understood the opportunity and the obligation to “build on strengths.” All of this occurred in the midst of an economic depression that threatened the entire town. “Remarkably, Fayetteville blacks continued to contribute to the school's operation, demonstrating the resilience of the community as well as the importance that it attached to education.”

The most enduring legacy of Robert Harris, the first leader of the Howard School, was in the training of teachers. Waves of students sought to be educated at the school, and teachers were in short supply. Out of necessity, Harris began to train teachers for the Howard School and for the small rural schools in Cumberland and surrounding counties.

By the time that Governor Zebulon Vance decided to establish two state normal schools—one for African-American teachers in Fayetteville and one for white teachers at the University of North Carolina at Chapel Hill, the Howard School had already been operating as a normal school for a full decade. The year that the first two state normal schools in North Carolina were established was 1877, and the Howard School that year became not just the first public normal school for African Americans in North Carolina but also the first state-sponsored institution for the education of African-American teachers in the South.

By a legislative act of 1877, the North Carolina General Assembly provided for the establishment of a Normal School for the education of Black teachers. The Howard School was chosen as the most promising because of its successful record during the previous ten years. It was designated a teacher training institution, and its name was changed to the State Colored Normal School. Five Administrative Officers served for relatively short periods until 1899: Robert L. Harris, Charles W. Chesnutt, Ezekiel E. Smith, George Williams, and the Rev. L. E. Fairley.

In 1899, Dr. Smith returned to the institution. Under his administration, the school grew from three rooms in a small frame structure to a physical plant of ten buildings on a fifty-acre tract of land. In order to pay for the land, Dr. Smith, along with F. D. Williston, E. N. Williams, J. G. Smith and Dr. P. N. Melchor, endorsed a note for \$3,000.00. The note was renewed several times and eventually paid off by Dr. Smith, who later deeded the land to the State. Dr. Smith retired in 1933 at the age of 80 with more than 40 years of service to the institution.

Dr. J. Ward Seabrook succeeded Dr. Smith and under his presidency the school became Fayetteville State Teachers College, thereafter being authorized to grant the Bachelor of Science degree in Education. The college received both state and regional accreditation in 1947. Dr. Seabrook retired in 1956 and was succeeded by Dr. Rudolph Jones. During his administration, the curriculum was expanded to include majors in secondary education and programs leading to degrees outside the teaching field. The name of the school was changed to Fayetteville State College in 1963. Also, under the leadership of Dr. Jones, six additions were made to the physical plant to accommodate a rapidly expanding enrollment.

In 1969, the institution acquired its present name, "Fayetteville State University," and Dr. Charles "A" Lyons, Jr. was elected president. By a legislative act in 1972, Fayetteville State University became a constituent institution of the University of North Carolina System, and Dr. Lyons became its first chancellor. During his tenure, the curriculum was expanded to include a variety of both baccalaureate and master's level programs. In addition, the Fort Bragg-Pope AFB Extension Center, in conjunction with the Weekend and Evening College, was established in order to provide military personnel and other persons employed full-time with the opportunity to further their education. The general academic structure took its present configuration in 1985 when the university became a Comprehensive Level I Institution. In addition to expanding program offerings and services, eight buildings were added to the physical plant during this period.

On January 1, 1988, Dr. Lloyd V. Hackley became the seventh Chief Executive Officer of the university. In his seven years as Chancellor, the university expanded its master's level program offerings to include biology, business administration, education, English, history, mathematics, psychology, sociology, and teaching; FSU's first doctoral program in Educational Leadership was established; and, baccalaureate program offerings were also increased to include 36 disciplines in the arts and sciences, business and economics, and education. The addition of the \$6.3 million ultra-modern School of Business and Economics Building, and the new \$10.9 million Health and Physical Education Building, underscored Dr. Hackley's commitment to FSU's continued expansion and growth.

Chancellor Hackley strengthened FSU's community outreach to at-risk children in the public schools, establishing numerous scholarship and tutoring/mentoring programs to encourage more young people to aspire to academic excellence and a college education. FSU's first major public capital campaign was also completed during Dr. Hackley's tenure, which enabled the university to increase the number of privately funded scholarships. On December 31, 1994, Dr. Hackley left his post to become President of the North Carolina Department of Community Colleges, the first African-American to lead the state's system of 59 community colleges. Dr. Donna J. Benson, Associate Vice President for Academic Affairs of the University of North Carolina served as Interim Chancellor from January 1, 1995 to November 15, 1995.

Dr. Willis McLeod, a 1964 graduate of Fayetteville State University, was appointed Chancellor on November 15, 1995. Dr. McLeod is the ninth Chief Executive Officer of the 130-year-old institution, and the first alumnus to serve as Chancellor since FSU became a constituent of The University of North Carolina in 1972. Dr. McLeod earned his master's and doctoral degrees in school administration from the University of Virginia, and has over

30 years of experience in education as a teacher, assistant superintendent, and superintendent of public school systems in Virginia, Louisiana, and North Carolina.

Several major initiatives have been established by Dr. McLeod to lead FSU into the 21st century. The “Freshman Year Initiative,” (or F.Y.I.) a program designed to enhance students’ educational outcomes, was initiated in fall 1996; new outreach efforts aimed at forging stronger community ties and involving the community in University life have been undertaken; campus improvements such as expansion of the Rudolph Jones Student Center and master planning to accommodate an expected enrollment increase of 50%; and Dr. McLeod has been instrumental in forming a regional partnership of public school, community college, and university leaders to focus on strengthening the educational pipeline from pre-school to post-graduate studies.

Dr. T. J. Bryan was appointed Chancellor on June 18, 2003. Dr. Bryan is the tenth Chief Executive Officer of the 136-year-old institution, and the first female to head the institution. She is also the first African-American woman to lead a UNC institution. In recommending Bryan to the Board of Governors, President Broad said: *“T.J. Bryan brings to Fayetteville State University great energy, enthusiasm, and a proven record of administrative success at the campus level and in two highly respected public university systems. The proud product of an HBCU, she has demonstrated a passionate commitment to sustaining the special mission of these institutions. Throughout a career that spans two decades, a signature of her leadership has been her advocacy of minority student achievement, educational access and equity, and strong faculty support. I am confident she is the right person to lead FSU through a period of dramatic growth and transformation.”*

The hallmark of her first year has been an emphasis on “building on strengths”. She has issued a call to action—on all academic fronts. She has fostered academic-program development; currently new programs are being developed in forensic science, biotechnology, communications, and management information systems. On Chancellor Bryan’s direction, a generic program in nursing was developed and fully approved in seven months. She has mandated that specialized accreditation be sought for all academic programs when such accreditation is available. Chancellor Bryan has required that all academic units have 90% of full-time faculty with terminal degrees by fall 2005. Also, during her first year, the university improved its service to students in an array of ways, including an extension of hours in key areas—Registrar, Admissions, Graduate School, Financial Aid, Cashier, Evening/Weekend College, Book Store. An 18 x 7 computer laboratory has been made available to students. Shared governance has increased, as processes have become increasingly transparent.

Administration of the University of North Carolina

The Board of Governors

J. Bradley Wilson, Chairman
G. Irvin Aldridge, Vice Chairman
Patsy B. Perry, Secretary

Bradley T. Adcock
James G. Babb
Brent D. Barringer
J. Addison Bell
R. Steve Bowden
F. Edward Broadwell, Jr.
William L. Burns, Jr.
Anne W. Cates
John F.A. V. Cecil
Bert Collins
John W. Davis III
Ray S. Farris
Dudley E. Flood
Hannah D. Gage
Willie J. Gilchrist
H. Frank Grainger
Peter D. Hans
Peter Keber
Adelaide Daniels Key
G. Leroy Laid
Charles H. Mercer, Jr.
Charles S. Norwood
Cary C. Owen
Jim W. Phillips, Jr.
Gladys Ashe Robinson
Estelle 'Bunny' Sanders
C. Craig Souza
Priscilla P. Taylor
Robert F. Warwick

Emeritus Members

C. Clifford Cameron
James E. Holshouser, Jr.
Benjamin S. Ruffin

Ex-Officio

Jonathan L. Ducote

History of the University of North Carolina

In North Carolina, all the public educational institutions that grant baccalaureate degrees are part of the University of North Carolina. Fayetteville State University is one of the 16 constituent institutions of the multi-campus state university.

The University of North Carolina, chartered by the N.C. General Assembly in 1789, was the first public university in the United States to open its doors and the only one to graduate students in the eighteenth century. The first class was admitted in Chapel Hill in 1795. For the next 136 years, the only campus of the University of North Carolina was at Chapel Hill.

In 1877, the N.C. General Assembly began sponsoring additional institutions of higher education, diverse in origin and purpose. Five were historically black institutions, and another was founded to educate American Indians. Several were created to prepare teachers for the public schools. Others had a technological emphasis. One is a training school for performing artists.

In 1931, the N.C. General Assembly redefined the University of North Carolina to include three state-supported institutions: the campus at Chapel Hill (now the University of North Carolina at Chapel Hill), North Carolina State College (now North Carolina State University at Raleigh), and Woman's College (now the University of North Carolina at Greensboro). The new multi-campus University operated with one board of trustees and one president. By 1969, three additional campuses had joined the University through legislative action: the University of North Carolina at Charlotte, the University of North Carolina at Asheville, and the University of North Carolina at Wilmington.

In 1971, the General Assembly passed legislation bringing into the University of North Carolina the state's ten remaining public senior institutions, each of which had until then been legally separate: Appalachian State University, East Carolina University, Elizabeth City State University, Fayetteville State University, North Carolina Agricultural and Technical State University, North Carolina Central University, the North Carolina School of the Arts, Pembroke State University, Western Carolina University, and Winston-Salem State University. This action created the current 16-campus University. (In 1985, the North Carolina School of Science and Mathematics, a residential high school for gifted students, was declared an affiliated school of the University; and in 1996 Pembroke State University was renamed The University of North Carolina at Pembroke through legislative action.)

The UNC Board of Governors is the policy-making body legally charged with the general determination, control, supervision, management, and governance of all affairs of the constituent institutions. It elects the president, who administers the University. The 32 voting members of the Board of Governors are elected by the General Assembly for four-year terms. Former board chairmen and board members who are former governors of North Carolina may continue to serve for limited periods as non-voting members emeriti. The president of the UNC Association of Student Governments, or that student's designee, is also a non-voting member.

Each of the 16 constituent institutions is headed by a chancellor, who is chosen by the Board of Governors on the president's nomination and is responsible to the president. Each institution has a board of trustees, consisting of eight members elected by the Board of

Governors, four appointed by the governor, and the president of the student body, who serves ex-officio. (The NC School of the Arts has two additional ex-officio members.) Each board of trustees holds extensive powers over academic and other operations of its institution on delegation from the Board of Governors.

Institutional Memberships and Accreditations

The university holds institutional membership and/or accreditation in the following agencies and professional organizations:

The Adult Education Association, U.S.A.
American Association for Counseling and Development
The American Association of Colleges and Schools for Teacher Education (AACTE)
The American Association of State Colleges and Universities (AASCU)
The American Council on Education (ACE)
Association for Continuing and Higher Education (ACHE)
The Central Intercollegiate Athletic Association (CIAA)
Council for Advancement and Support of Education (CASE)
The National Alliance of Business
National Association for Equal Opportunity in Higher Education (NAFEO)
National Association for Student Financial Aid Administrators (NASFAA)
The National Association of Business Teacher Education
The National Collegiate Athletic Association (NCAA)
The National Council for Accreditation of Teacher Education (NCATE)
The National League of Nursing (NLN)
The North Carolina Association of Colleges and Universities
North Carolina Day Care Association
The North Carolina Department of Public Instruction (DPI)
The Servicemen's Opportunity College (SOC)
The Southern Association of Colleges and Schools (SACS)
The Southern Conference of Graduate Schools (SCGS)

Centers and Special Programs

Center for Extended Learning
Center for Economic Education
Curriculum Learning Resource Laboratory
Distance Learning Center
Early Childhood Learning Center
Educational Opportunity Centers Program
Educational Talent Search Program
Fine Arts Resource Center
Mathematics and Science Education Center
Office of School Services
Public Radio WFSS 91.9 FM
Rosenthal Gallery
Servicemen's Opportunity College
Small Business and Technology Development Center
Fort Bragg-Pope Air Force Base University Center.
University Testing Services
Upward Bound Program
Veterans Affairs

Fayetteville State University

Five Year Executive Dashboard - Fall 2003

Student Body

Main Campus

Headcount Enrollment

5039	15.97%
4345	fall semester

Freshmen Enrollment

802	(0.37%)
545 (lowest)	
805	fall semester

Freshmen-Sophomore

Retention

73.4%	(0.8%)
74.2%	one year rate

Graduation Rate

24.5%	10.2%
14.2%	1995/1999 cohorts

Distance Education

Headcount Enrollment

543	(16.7%)
652	fall semester

Unduplicated Distance Education

290	(45.3%)
530	fall semester

Total Enrollment

Resident & Distance Education

5329	6.6%
4997	fall semester

Diversity (black/all other)

75.4% / 24.6%	(3.9%)
71.5% / 29.5%	

Sex

66% / 34%	No change
65% / 35%	(female/male)

Residency

In State

92.3%	2.5%
89.8%	

From Cumberland County

2575	8.2%
2380	

Admission

Applicant Pool

1910	(9.3%)
2105	fall 2002/1999

Selectivity

86.3%	No Change
85.9%	fall 2002/1999

Yield

45.5%	1.0%
44.5%	fall 2002/1999

Average SAT

867	No Change
867	fall 2002/1999

Average High School GPA

2.77	No Change
2.79	fall 2002/1999

Faculty

Terminal Degree

67.94%	(4.52%)
72.46%	

Tenure

45.93%	(7.69%)
53.62%	

Student/Faculty Ratio

21 / 1	3%
18 / 1	

Classes Over 35

165 (13.9%)	(1.0%)
128 (14.9%)	

Advancement

Total Gifts & Grants

\$ 755,099	43.4%
\$ 427,528	FY 2003 / 1999

Alumni Participation

903	10.1%
820	FY 2003 / 2001

Finance

Revenue FY 2002/2000

\$ 54,021,146	(3.4%)
\$ 55,915,031	

Expenditures FY 2002/2000

\$57,294,163	3.2%
\$55,538,132	

Physical Plant

Replacement Value

\$103,645,171	9.1%
\$ 95,008,429	2002/1998

% Student Stations Utilized when in use

52.9	No change
52.3	2002/1998

Total Classroom Hours of Instruction

2,343	24.6%
1,881	2002/1998

Total Lab Hours of Instruction

515	6.2%
485	2002/1998

Key: (Year)

Top value: 2003

Bottom value: 1999

Importance of Change:

Green = Better

Red = Worse

Black - Neutral

FSU has developed a new generic baccalaureate nursing degree program to help fill the need for nurses to serve the region, state, nation, and global community. The BSN program has been approved by the North Carolina Board of Nursing and the UNC Board of Governors.

Students



Narrative Summary of Student Data

Fall 2003

First Time Freshmen Applications: In the Fall of 2003, 1628 first time freshmen were accepted from a pool of 1913 applicants. The acceptance rate of females was approximately 86%, the acceptance rate of males was approximately 83%. The typical applicant was female (60%), under 20 (95%), in-state (81%), and Black (89%). Forty-six percent of applicants had an average SAT of greater than 800 and less than 1000. Fifty-five percent had a HSGPA averaging between 2.01 and 3.00.

First Time Freshmen Enrolled: In the Fall of 2003, 802 first time freshmen were enrolled. Males represented 45% of first time enrolled freshmen, higher than the 35% of males who represented the total student population for the same period.

Ninety percent of first time freshmen enrolled were from in-state, slightly lower than the 92% in-state residency of total enrolled students in Fall, 2003. Whites and Blacks composed ninety-five percent of first time freshmen enrolled. Blacks composed eighty-seven percent of the first time enrolled freshmen, 10% higher than the 77% of Blacks representing total enrollment for the same period.

The typical first time freshmen enrolled student was female (55%), under 20 (95%), in-state (90%), and Black (87%). Most first time enrolled freshmen (88%) had an average SAT of less than 1001 and HSGPA averaging ranging between 2.51 and 3.50 (62%).

Fall Enrollment: In the Fall of 2003, total enrollment increased less than 1% from the previous Fall. During the Falls of 2001-2003, total enrollment ranged from 5,010 to 5,329.

In the Fall of 2003, females represented 66% of the student population. Black enrollment was 75% and White represented 18%. Hispanic enrollment was projected to be the fastest growing population in the state for the next several years. Ninety-two percent of the students were from North Carolina, 42% were non-traditional students over the age of 24, and 79% were seeking a baccalaureate degree. Over three-fourths of all students were commuters (79%). The typical enrolled student was female (66%), under 22 (43%), in-state (92%), and Black (75%).

Top three undergraduate majors included Business Administration (636), Education (479), and Government & History (374). Of 12 graduate programs, the top three were Education (164), Business Administration (33), and Government and History (21)

Spring 2004

First Time Freshmen Applications: In the Spring of 2004, ninety-five first time freshmen were accepted from a pool of 111 applications. Acceptance rates were approximately 86% for both males and females. The typical applicant was female (55%), under 20 (69%), in-state (79%), and Black (80%). Most applicants (93%) had an average SAT of less than 1000 and HSGPA averaging between 2.01 and 3.00 (55%).

First Time Freshmen Enrolled: In the Spring of 2004, sixty-one first time freshmen were enrolled. Males represented 52% of first time enrolled freshmen, higher than the 33% percent males who represented the total student population for the same period.

Ninety-two percent of first time freshmen enrolled from in-state, consistent with residence of total enrolled students in Spring, 2004. Whites and Blacks composed ninety-five percent of first time freshmen enrolled. Blacks composed eighty-four percent of the first time enrolled freshmen, an 8% increase in the 76% of Blacks representing total enrollment. The typical first time freshmen enrolled student was male (52%), under 20 (74%), in-state (92%), and Black (84%). Most first time enrolled freshmen (95%) had an average SAT of less than 1000 and HSGPA averaging ranging between 2.01 and 3.00 (72%).

Spring Enrollment: In the Spring of 2004, total enrollment decreased 3.1% from the previous Spring. The decrease in enrollment was due to the decrease in distance education enrollment at the Fort Bragg Center. During the Springs of 2001-2004, total enrollment ranged from 4,529 to 5,000.

In the Spring of 2004, females represented two-thirds of the student population. Black enrollment was 76% and White represented 18%. Hispanic enrollment was projected to be the fastest growing population in the state for the next several years. Ninety-three percent of the students were from North Carolina, 41% were non-traditional students over the age of 24, and 79% were seeking a baccalaureate degree. Over three-fourths of all students were commuters (78%). The typical enrolled student was female (67%), over 24 (41%), in-state (93%), and Black (76%).

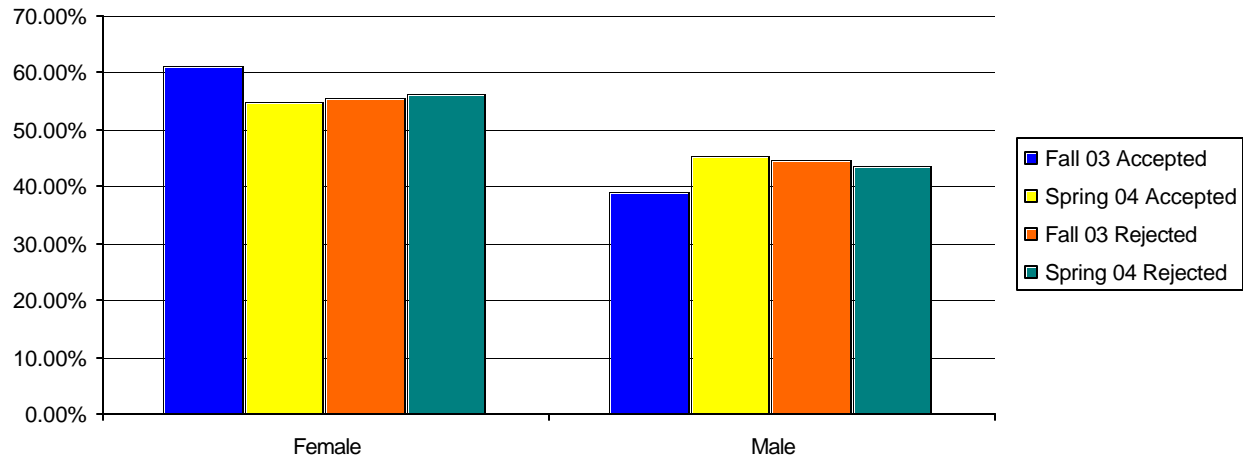
Top three undergraduate majors included Business Administration (583), Education (469), and Government & History (352). Of 12 graduate programs, the top three were Education (203), Government and History (62), and Business Administration (42).

Degrees Awarded 2003-04: A total of 776 degrees were conferred during the past year. Of that number, 689 were baccalaureate, 82 were masters, and 7 were doctorate degrees. Forty seven percent were Cumberland County residents. The six highest yielding undergraduate majors were Business Administration (139), Criminal Justice (93), Sociology (72), Psychology (65), History (55) and, Biology (33). The six-year graduation rate for the 1997 cohort was 38%.

First Time Freshmen Applicants Fall 2003 & Spring 2004

By Gender

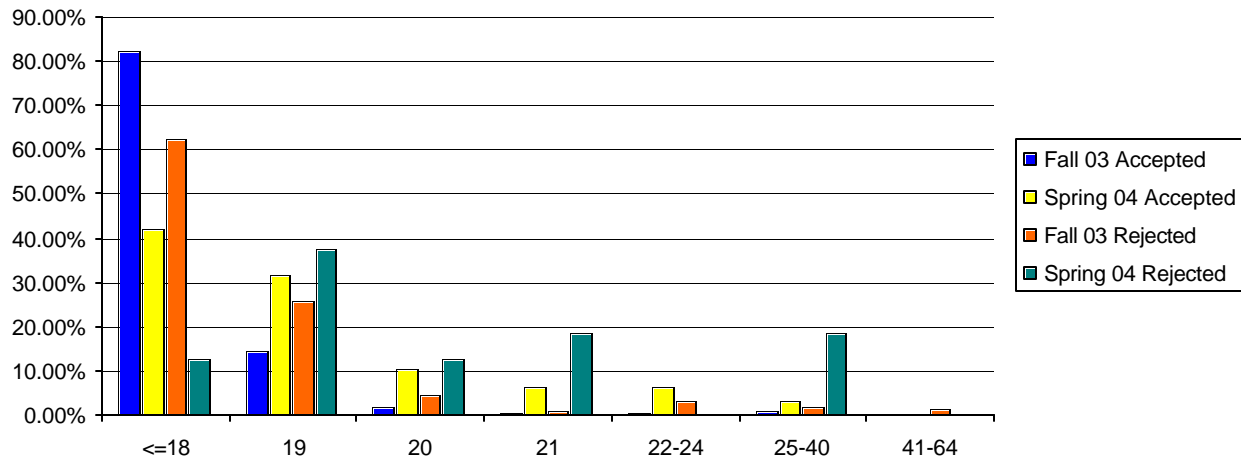
	Accepted				Rejected				Total			
	Fall 2003		Spring 2004		Fall 2003		Spring 2004		Fall 2003		Spring 2004	
	Count	Percent	Count	Percent	Count	Percent	Count	Percent	Count	Percent	Count	Percent
Female	995	61.12%	52	54.74%	158	55.44%	9	56.25%	1153	60.27%	61	54.95%
Male	633	38.88%	43	45.26%	127	44.56%	7	43.75%	760	39.73%	50	45.05%
Total	1628	100.00%	95	100.00%	285	100.00%	16	100.00%	1913	100.00%	111	100.00%



First Time Freshmen Applicants Fall 2003 & Spring 2004

By Age

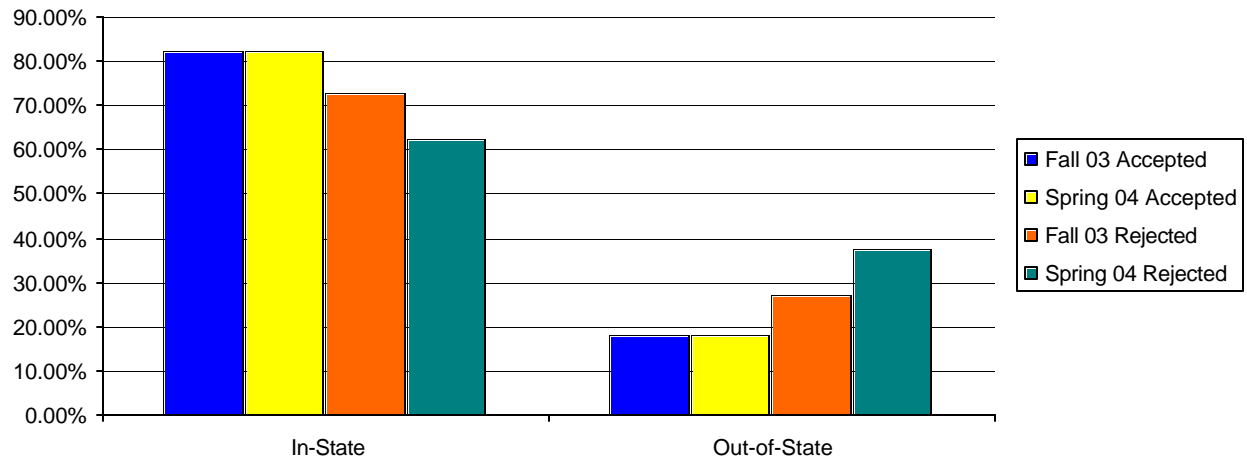
	Accepted				Rejected				Total			
	Fall 2003		Spring 2004		Fall 2003		Spring 2004		Fall 2003		Spring 2004	
	Count	Percent	Count	Percent	Count	Percent	Count	Percent	Count	Percent	Count	Percent
<=18	1338	82.19%	40	42.11%	178	62.46%	2	12.50%	1516	79.25%	42	37.84%
19	232	14.25%	30	31.58%	74	25.96%	6	37.50%	306	16.00%	36	32.43%
20	28	1.72%	10	10.53%	13	4.56%	2	12.50%	41	2.14%	12	10.81%
21	9	0.55%	6	6.32%	2	0.70%	3	18.75%	11	0.58%	9	8.11%
22-24	6	0.37%	6	6.32%	9	3.16%	0	0.00%	15	0.78%	6	5.41%
25-40	13	0.80%	3	3.16%	5	1.75%	3	18.75%	18	0.94%	6	5.41%
41-64	2	0.12%	0	0.00%	4	1.40%	0	0.00%	6	0.31%	0	0.00%
Total	1628	100.00%	95	100.00%	285	100.00%	16	100.00%	1913	100.00%	111	100.00%



First Time Freshmen Applicants Fall 2003 & Spring 2004

By Residency

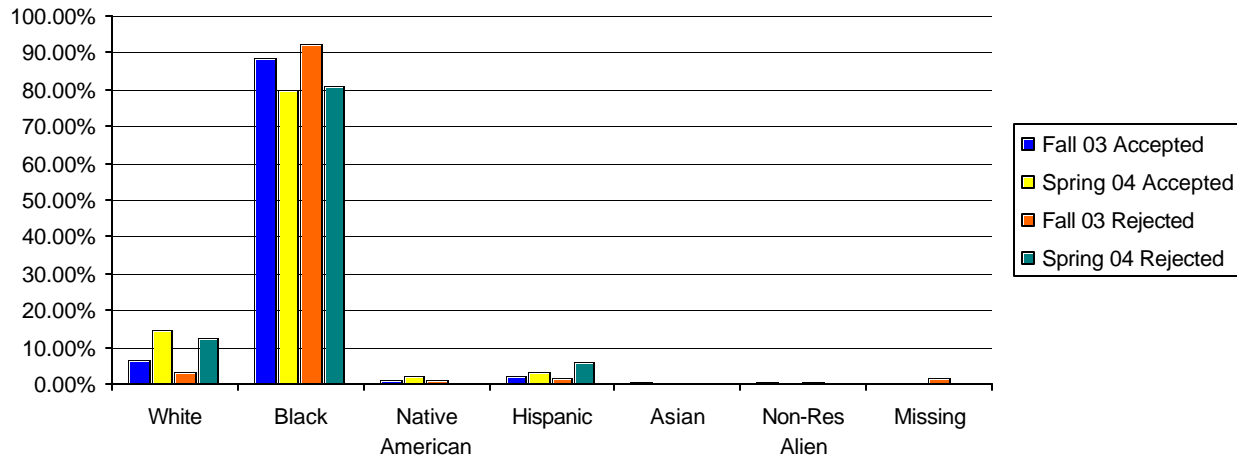
	Accepted				Rejected				Total			
	Fall 2003		Spring 2004		Fall 2003		Spring 2004		Fall 2003		Spring 2004	
	Count	Percent	Count	Percent	Count	Percent	Count	Percent	Count	Percent	Count	Percent
In-State	1337	82.13%	78	82.11%	208	72.98%	10	62.50%	1545	80.76%	88	79.28%
Out-of-State	291	17.87%	17	17.89%	77	27.02%	6	37.50%	368	19.24%	23	20.72%
Total	1628	100.00%	95	100.00%	285	100.00%	16	100.00%	1913	100.00%	111	100.00%



First Time Freshmen Applicants Fall 2003 & Spring 2004

By Race

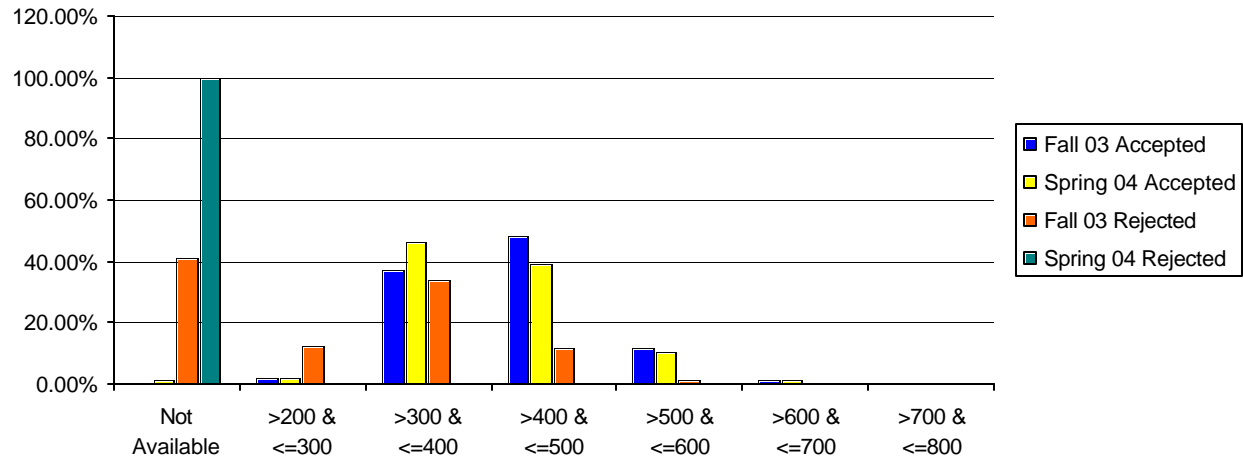
	Accepted				Rejected				Total			
	Fall 2003		Spring 2004		Fall 2003		Spring 2004		Fall 2003		Spring 2004	
	Count	Percent	Count	Percent	Count	Percent	Count	Percent	Count	Percent	Count	Percent
White	108	6.63%	14	14.74%	9	3.16%	2	12.50%	117	6.12%	16	14.41%
Black	1443	88.64%	76	80.00%	264	92.63%	13	81.25%	1707	89.23%	89	80.18%
Native American	18	1.11%	2	2.11%	3	1.05%	0	0.00%	21	1.10%	2	1.80%
Hispanic	37	2.27%	3	3.16%	4	1.40%	1	6.25%	41	2.14%	4	3.60%
Asian	13	0.80%	0	0.00%	0	0.00%	0	0.00%	13	0.68%	0	0.00%
Non-Res Alien	7	0.43%	0	0.00%	1	0.35%	0	0.00%	8	0.42%	0	0.00%
Missing	2	0.12%	0	0.00%	4	1.40%	0	0.00%	6	0.31%	0	0.00%
Total	1628	100.00%	95	100.00%	285	100.00%	16	100.00%	1913	100.00%	111	100.00%



First Time Freshmen Applicants Fall 2003 & Spring 2004

By SAT Verbal Score

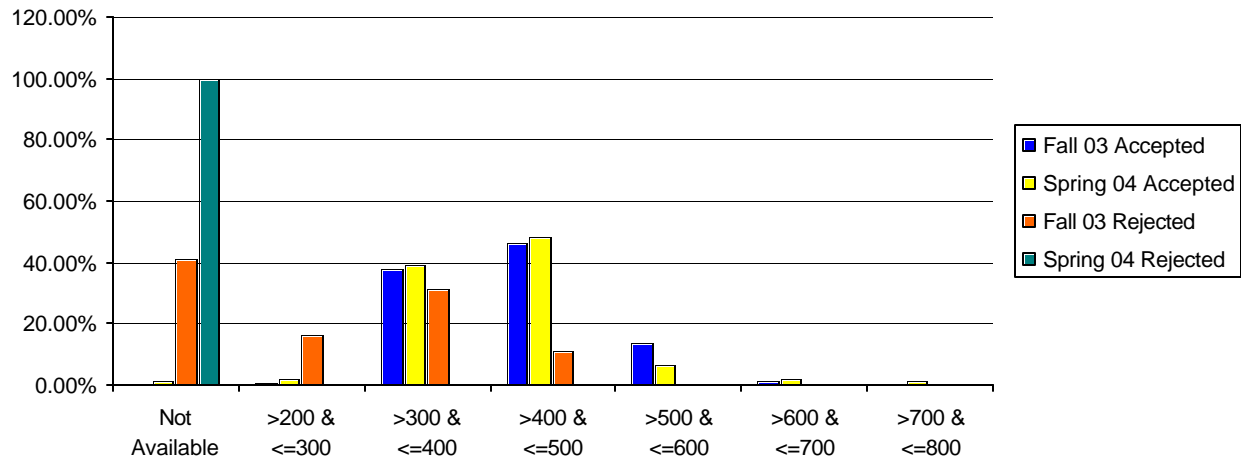
	Accepted				Rejected				Total			
	Fall 2003		Spring 2004		Fall 2003		Spring 2004		Fall 2003		Spring 2004	
	Count	Percent	Count	Percent	Count	Percent	Count	Percent	Count	Percent	Count	Percent
Not Available	0	0.00%	1	1.05%	118	41.40%	16	100.00%	118	6.17%	17	15.32%
>200 & <=300	30	1.84%	2	2.11%	35	12.28%	0	0.00%	65	3.40%	2	1.80%
>300 & <=400	603	37.04%	44	46.32%	96	33.68%	0	0.00%	699	36.54%	44	39.64%
>400 & <=500	786	48.28%	37	38.95%	33	11.58%	0	0.00%	819	42.81%	37	33.33%
>500 & <=600	190	11.67%	10	10.53%	3	1.05%	0	0.00%	193	10.09%	10	9.01%
>600 & <=700	18	1.11%	1	1.05%	0	0.00%	0	0.00%	18	0.94%	1	0.90%
>700 & <=800	1	0.06%	0	0.00%	0	0.00%	0	0.00%	1	0.05%	0	0.00%
Total	1628	100.00%	95	100.00%	285	100.00%	16	100.00%	1913	100.00%	111	100.00%



First Time Freshmen Applicants Fall 2003 & Spring 2004

By SAT Math Score

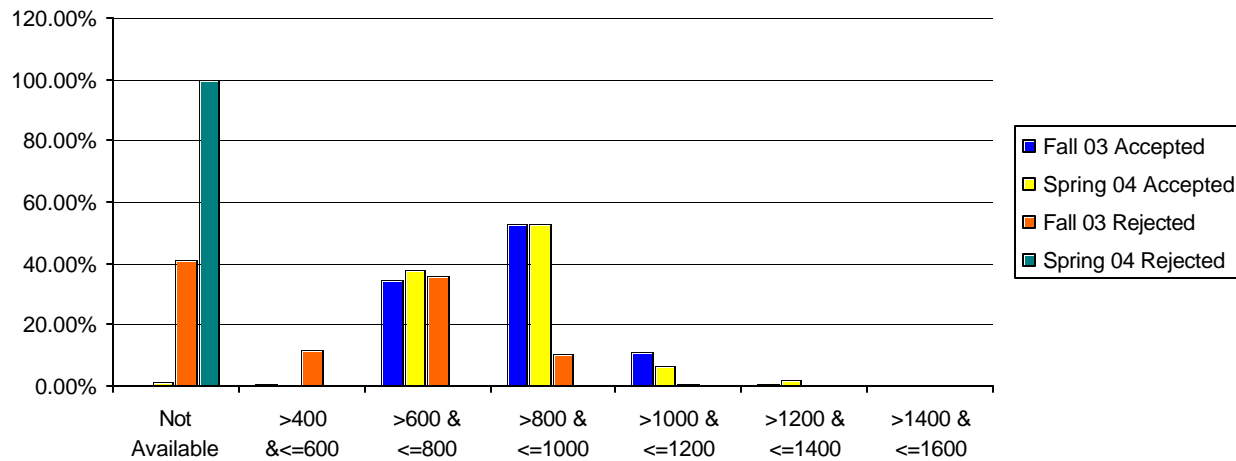
	Accepted				Rejected				Total			
	Fall 2003		Spring 2004		Fall 2003		Spring 2004		Fall 2003		Spring 2004	
	Count	Percent	Count	Percent	Count	Percent	Count	Percent	Count	Percent	Count	Percent
Not Available	0	0.00%	1	1.05%	118	41.40%	16	100.00%	118	6.17%	17	15.32%
>200 & <=300	13	0.80%	2	2.11%	47	16.49%	0	0.00%	60	3.14%	2	1.80%
>300 & <=400	621	38.14%	37	38.95%	89	31.23%	0	0.00%	710	37.11%	37	33.33%
>400 & <=500	754	46.31%	46	48.42%	31	10.88%	0	0.00%	785	41.04%	46	41.44%
>500 & <=600	219	13.45%	6	6.32%	0	0.00%	0	0.00%	219	11.45%	6	5.41%
>600 & <=700	20	1.23%	2	2.11%	0	0.00%	0	0.00%	20	1.05%	2	1.80%
>700 & <=800	1	0.06%	1	1.05%	0	0.00%	0	0.00%	1	0.05%	1	0.90%
Total	1628	100.00%	95	100.00%	285	100.00%	16	100.00%	1913	100.00%	111	100.00%



First Time Freshmen Applicants Fall 2003 & Spring 2004

By SAT Combined

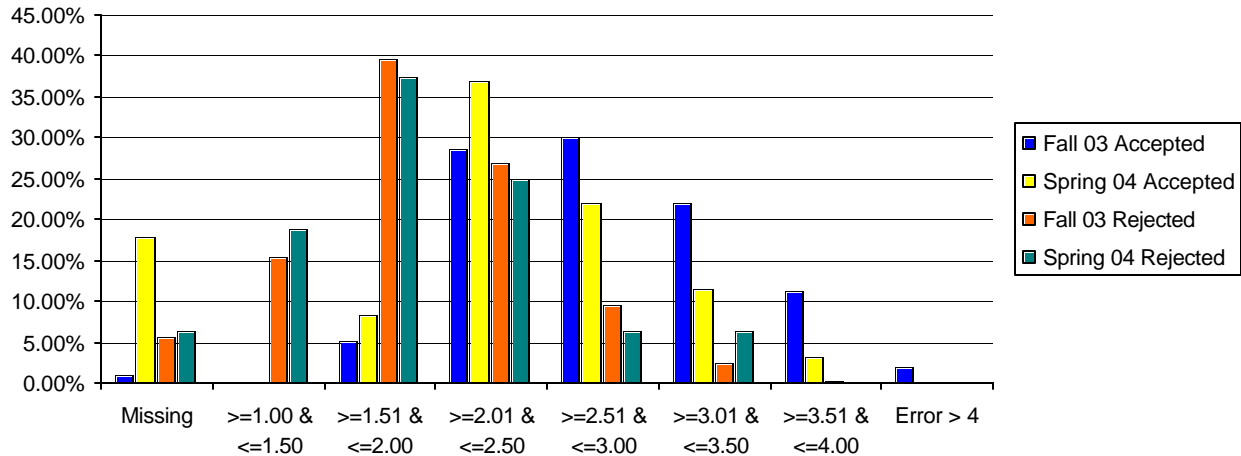
	Accepted				Rejected				Total			
	Fall 2003		Spring 2004		Fall 2003		Spring 2004		Fall 2003		Spring 2004	
	Count	Percent	Count	Percent	Count	Percent	Count	Percent	Count	Percent	Count	Percent
Not Available	0	0.00%	1	1.05%	118	41.40%	16	100.00%	118	6.17%	17	15.32%
>400 & <=600	6	0.37%	0	0.00%	34	11.93%	0	0.00%	40	2.09%	0	0.00%
>600 & <=800	567	34.83%	36	37.89%	102	35.79%	0	0.00%	669	34.97%	36	32.43%
>800 & <=1000	858	52.70%	50	52.63%	30	10.53%	0	0.00%	888	46.42%	50	45.05%
>1000 & <=1200	184	11.30%	6	6.32%	1	0.35%	0	0.00%	185	9.67%	6	5.41%
>1200 & <=1400	12	0.74%	2	2.11%	0	0.00%	0	0.00%	12	0.63%	2	1.80%
>1400 & <=1600	1	0.06%	0	0.00%	0	0.00%	0	0.00%	1	0.05%	0	0.00%
Total	1628	100.00%	95	100.00%	285	100.00%	16	100.00%	1913	100.00%	111	100.00%



First Time Freshmen Applicants Fall 2003 & Spring 2004

By High School GPA

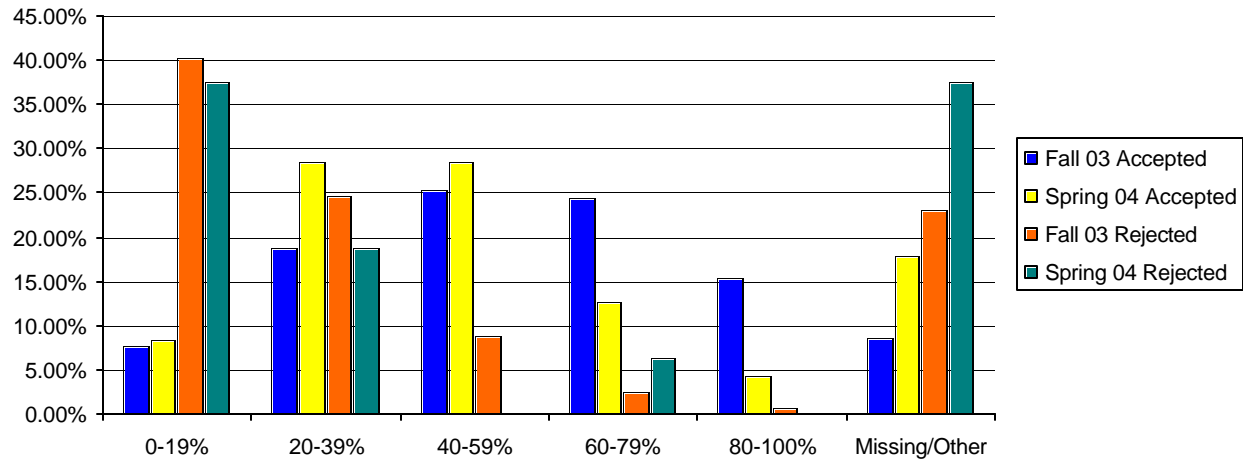
	Accepted				Rejected				Total			
	Fall 2003		Spring 2004		Fall 2003		Spring 2004		Fall 2003		Spring 2004	
	Count	Percent	Count	Percent	Count	Percent	Count	Percent	Count	Percent	Count	Percent
Missing	16	0.98%	17	17.89%	16	5.61%	1	6.25%	32	1.67%	18	16.22%
>=1.00 & <=1.50	0	0.00%	0	0.00%	44	15.44%	3	18.75%	44	2.30%	3	2.70%
>=1.51 & <=2.00	84	5.16%	8	8.42%	113	39.65%	6	37.50%	197	10.30%	14	12.61%
>=2.01 & <=2.50	466	28.62%	35	36.84%	77	27.02%	4	25.00%	543	28.38%	39	35.14%
>=2.51 & <=3.00	488	29.98%	21	22.11%	27	9.47%	1	6.25%	515	26.92%	22	19.82%
>=3.01 & <=3.50	359	22.05%	11	11.58%	7	2.46%	1	6.25%	366	19.13%	12	10.81%
>=3.51 & <=4.00	185	11.36%	3	3.16%	1	0.35%	0	0.00%	186	9.72%	3	2.70%
Error > 4	30	1.84%	0	0.00%	0	0.00%	0	0.00%	30	1.57%	0	0.00%
Total	1628	100.00%	95	100.00%	285	100.00%	16	100.00%	1913	100.00%	111	100.00%



First Time Freshmen Applicants Fall 2003 & Spring 2004

By Class Rank Quintiles

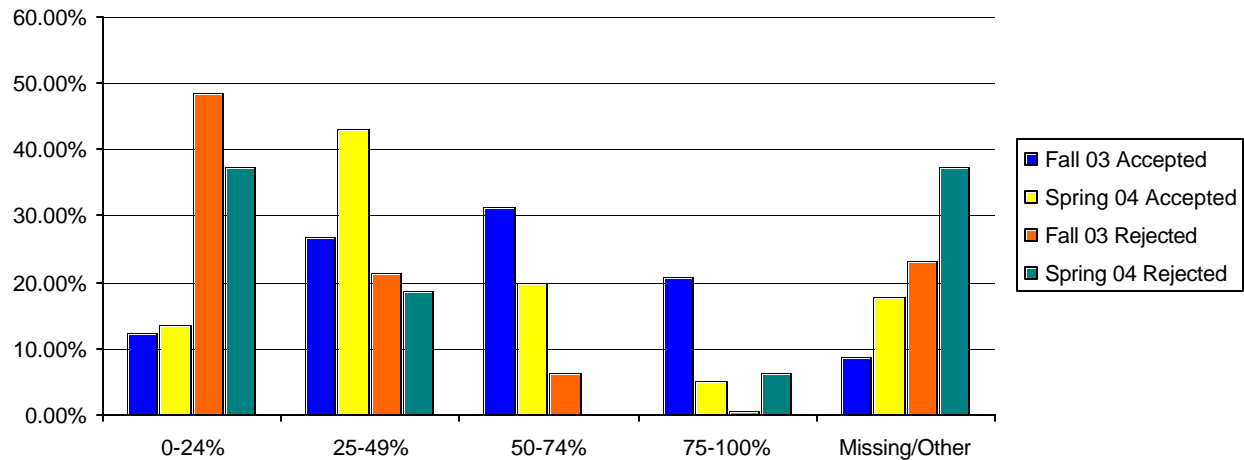
	Accepted				Rejected				Total			
	Fall 2003		Spring 2004		Fall 2003		Spring 2004		Fall 2003		Spring 2004	
	Count	Percent	Count	Percent	Count	Percent	Count	Percent	Count	Percent	Count	Percent
0-19%	124	7.62%	8	8.42%	115	40.35%	6	37.50%	239	12.49%	14	12.61%
20-39%	305	18.73%	27	28.42%	70	24.56%	3	18.75%	375	19.60%	30	27.03%
40-59%	412	25.31%	27	28.42%	25	8.77%	0	0.00%	437	22.84%	27	24.32%
60-79%	396	24.32%	12	12.63%	7	2.46%	1	6.25%	403	21.07%	13	11.71%
80-100%	251	15.42%	4	4.21%	2	0.70%	0	0.00%	253	13.23%	4	3.60%
Missing/Other	140	8.60%	17	17.89%	66	23.16%	6	37.50%	206	10.77%	23	20.72%
Total	1628	100.00%	95	100.00%	285	100.00%	16	100.00%	1913	100.00%	111	100.00%



First Time Freshmen Applicants Fall 2003 & Spring 2004

By Class Rank Quartiles

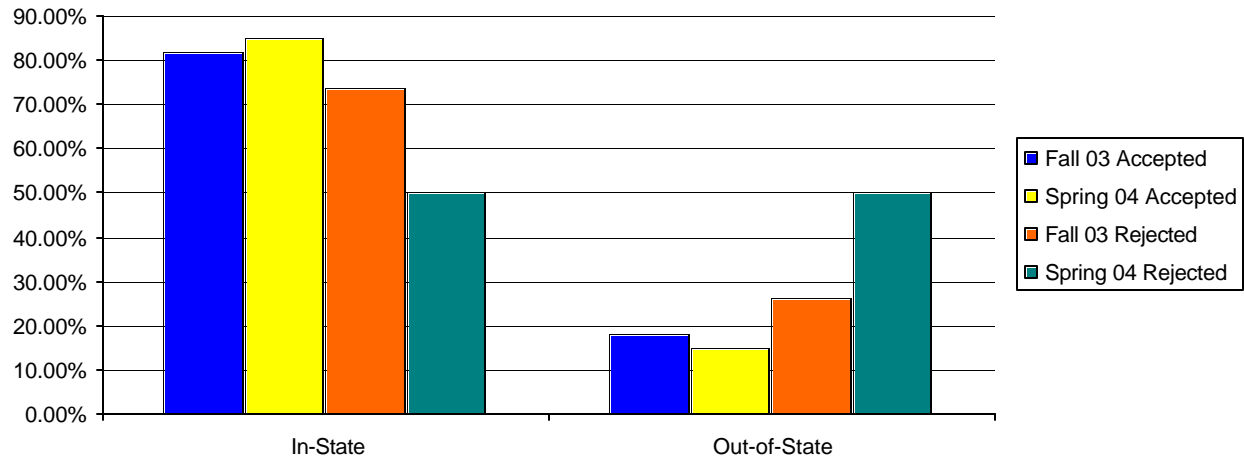
	Accepted				Rejected				Total			
	Fall 2003		Spring 2004		Fall 2003		Spring 2004		Fall 2003		Spring 2004	
	Count	Percent	Count	Percent	Count	Percent	Count	Percent	Count	Percent	Count	Percent
0-24%	199	12.22%	13	13.68%	138	48.42%	6	37.50%	337	17.62%	19	17.12%
25-49%	439	26.97%	41	43.16%	61	21.40%	3	18.75%	500	26.14%	44	39.64%
50-74%	509	31.27%	19	20.00%	18	6.32%	0	0.00%	527	27.55%	19	17.12%
75-100%	341	20.95%	5	5.26%	2	0.70%	1	6.25%	343	17.93%	6	5.41%
Missing/Other	140	8.60%	17	17.89%	66	23.16%	6	37.50%	206	10.77%	23	20.72%
Total	1628	100.00%	95	100.00%	285	100.00%	16	100.00%	1913	100.00%	111	100.00%



First Time Freshmen Applicants Fall 2003 & Spring 2004

By Graduating from High School the Previous Year & Residency

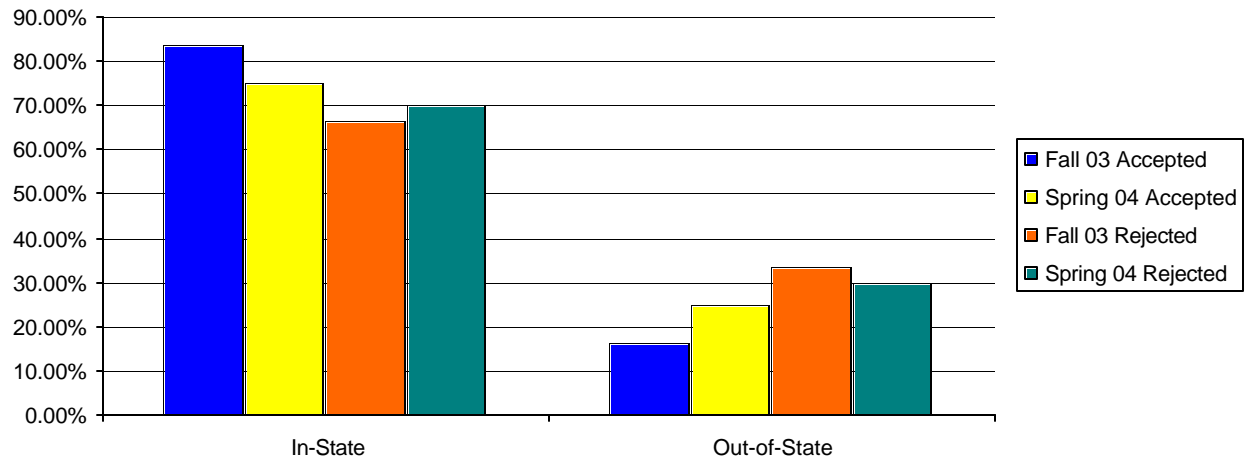
	Accepted				Rejected				Total			
	Fall 2003		Spring 2004		Fall 2003		Spring 2004		Fall 2003		Spring 2004	
	Count	Percent	Count	Percent	Count	Percent	Count	Percent	Count	Percent	Count	Percent
In-State	1235	82.01%	57	85.07%	186	73.81%	3	50.00%	1421	421.66%	60	82.19%
Out-of-State	271	17.99%	10	14.93%	66	26.19%	3	50.00%	337	19.17%	13	17.81%
Total	1506	100.00%	67	100.00%	252	100.00%	6	100.00%	1758	440.83%	73	100.00%



First Time Freshmen Applicants Fall 2003 & Spring 2004

By Not Graduating from High School the Previous Year & Residency

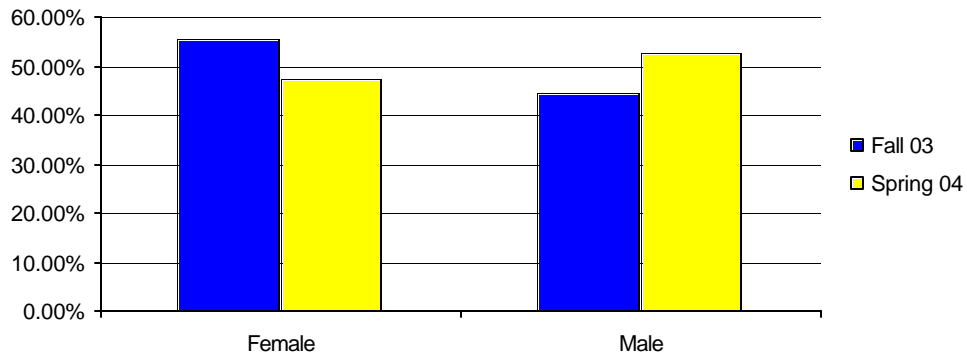
	Accepted				Rejected				Total			
	Fall 2003		Spring 2004		Fall 2003		Spring 2004		Fall 2003		Spring 2004	
	Count	Percent	Count	Percent	Count	Percent	Count	Percent	Count	Percent	Count	Percent
In-State	102	83.61%	21	75.00%	22	66.67%	7	70.00%	124	80.00%	28	73.68%
Out-of-State	20	16.39%	7	25.00%	11	33.33%	3	30.00%	31	20.00%	10	26.32%
Total	122	100.00%	28	100.00%	33	100.00%	10	100.00%	155	100.00%	38	100.00%



First Time Freshmen Enrolled Fall 2003 & Spring 2004

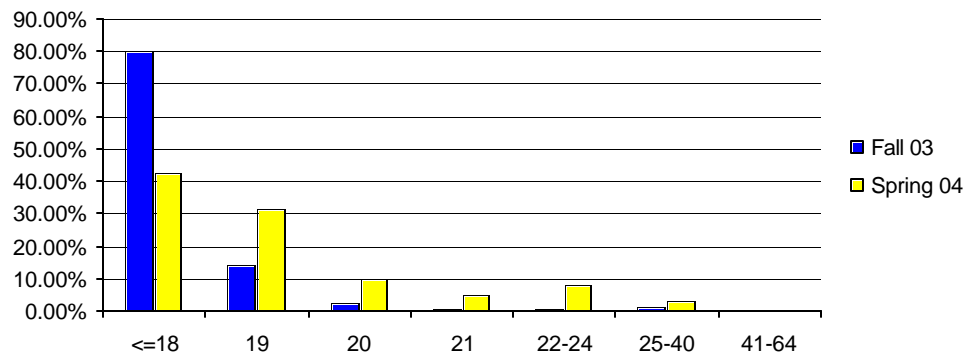
By Gender

	Fall 2003		Spring 2004	
	Count	Percent	Count	Percent
Female	445	55.49%	29	47.54%
Male	357	44.51%	32	52.46%
Total	802	100.00%	61	100.00%



By Age

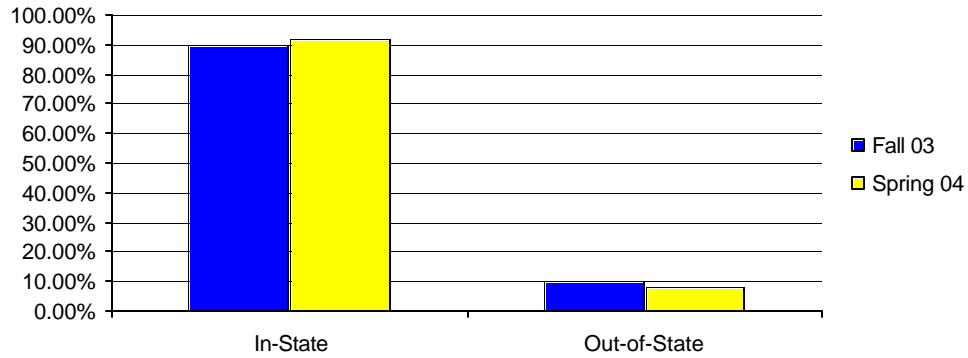
	Fall 2003		Spring 2004	
	Count	Percent	Count	Percent
<=18	645	80.42%	26	42.62%
19	116	14.46%	19	31.15%
20	20	2.49%	6	9.84%
21	6	0.75%	3	4.92%
22-24	4	0.50%	5	8.20%
25-40	9	1.12%	2	3.28%
41-64	2	0.25%	0	0.00%
Total	802	100.00%	61	100.00%



First Time Freshmen Enrolled Fall 2003 & Spring 2004

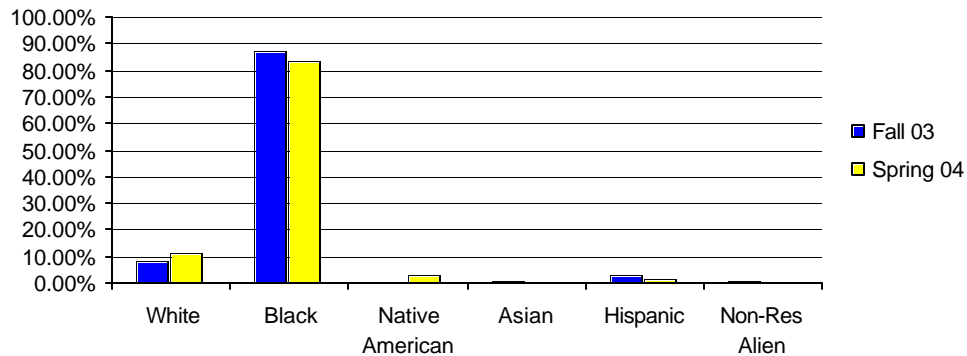
By Residence

	Fall 2003		Spring 2004	
	Count	Percent	Count	Percent
In-State	722	90.02%	56	91.80%
Out-of-State	80	9.98%	5	8.20%
Total	802	100.00%	61	100.00%



By Race

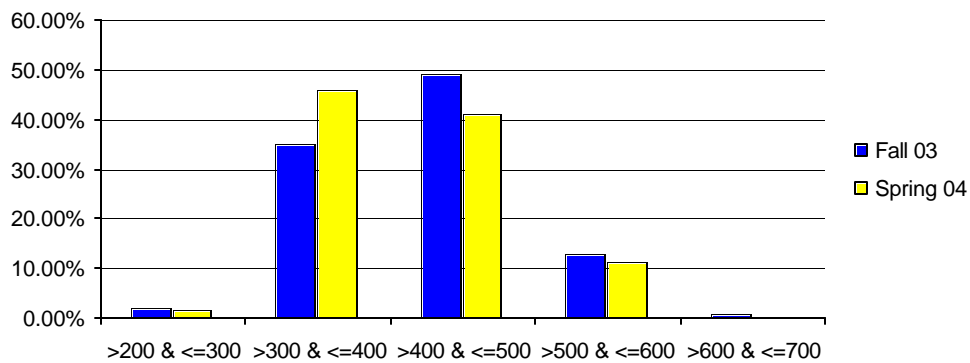
	Fall 2003		Spring 2004	
	Count	Percent	Count	Percent
White	65	8.10%	7	11.48%
Black	697	86.91%	51	83.61%
Native American	3	0.37%	2	3.28%
Asian	9	1.12%	0	0.00%
Hispanic	23	2.87%	1	1.64%
Non-Res Alien	5	0.62%	0	0.00%
Total	802	100.00%	61	100.00%



First Time Freshmen Enrolled Fall 2003 & Spring 2004

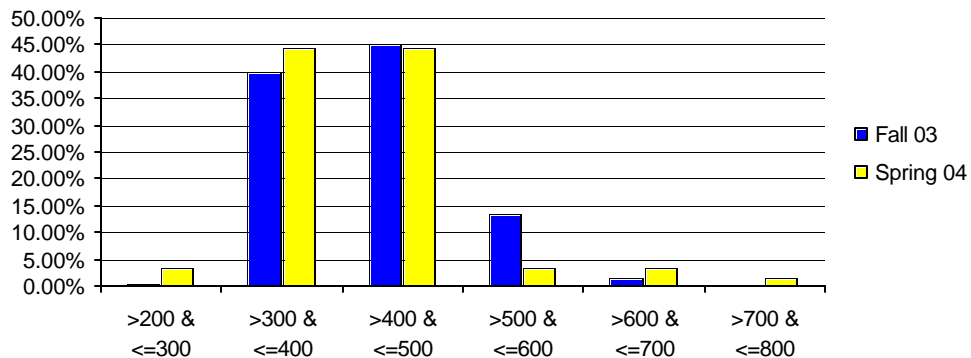
By SAT Verbal

	Fall 2003		Spring 2004	
	Count	Percent	Count	Percent
>200 & <=300	15	1.87%	1	1.64%
>300 & <=400	280	34.91%	28	45.90%
>400 & <=500	395	49.25%	25	40.98%
>500 & <=600	104	12.97%	7	11.48%
>600 & <=700	8	1.00%	0	0.00%
Total	802	100.00%	61	100.00%



By SAT Math

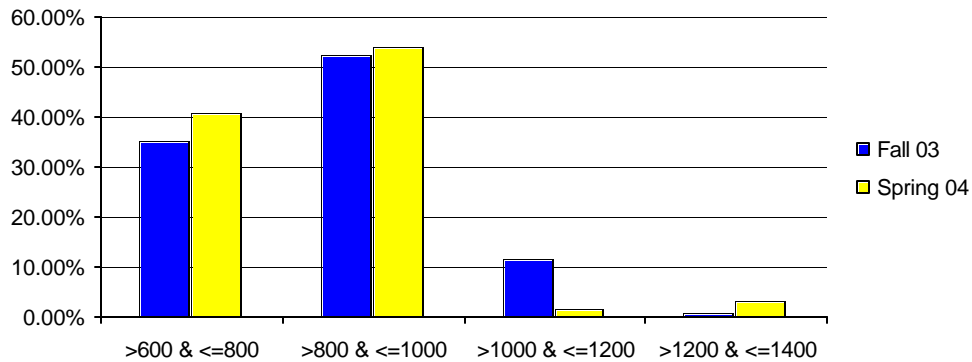
	Fall 2003		Spring 2004	
	Count	Percent	Count	Percent
>200 & <=300	2	0.25%	2	3.28%
>300 & <=400	319	39.78%	27	44.26%
>400 & <=500	361	45.01%	27	44.26%
>500 & <=600	108	13.47%	2	3.28%
>600 & <=700	12	1.50%	2	3.28%
>700 & <=800	0	0.00%	1	1.64%
Total	802	100.00%	61	100.00%



First Time Freshmen Enrolled Fall 2003 & Spring 2004

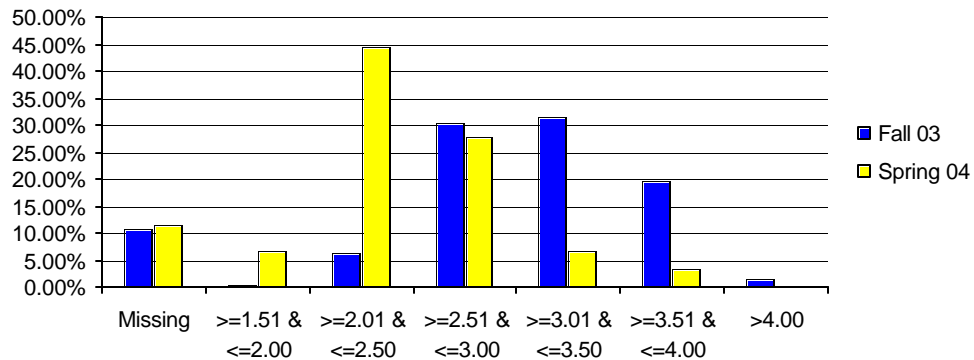
By SAT Combined

	Fall 2003		Spring 2004	
	Count	Percent	Count	Percent
>600 & <=800	281	35.04%	25	40.98%
>800 & <=1000	421	52.49%	33	54.10%
>1000 & <=1200	93	11.60%	1	1.64%
>1200 & <=1400	7	0.87%	2	3.28%
Total	802	100.00%	61	100.00%



By High School Grade Point Average

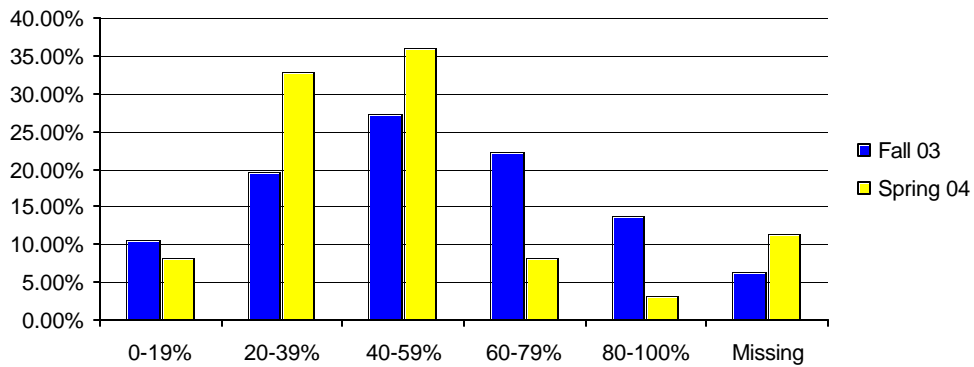
	Fall 2003		Spring 2004	
	Count	Percent	Count	Percent
Missing	85	10.60%	7	11.48%
>=1.51 & <=2.00	4	0.50%	4	6.56%
>=2.01 & <=2.50	50	6.23%	27	44.26%
>=2.51 & <=3.00	243	30.30%	17	27.87%
>=3.01 & <=3.50	251	31.30%	4	6.56%
>=3.51 & <=4.00	158	19.70%	2	3.28%
>4.00	11	1.37%	0	0.00%
Total	802	100.00%	61	100.00%



First Time Freshmen Enrolled Fall 2003 & Spring 2004

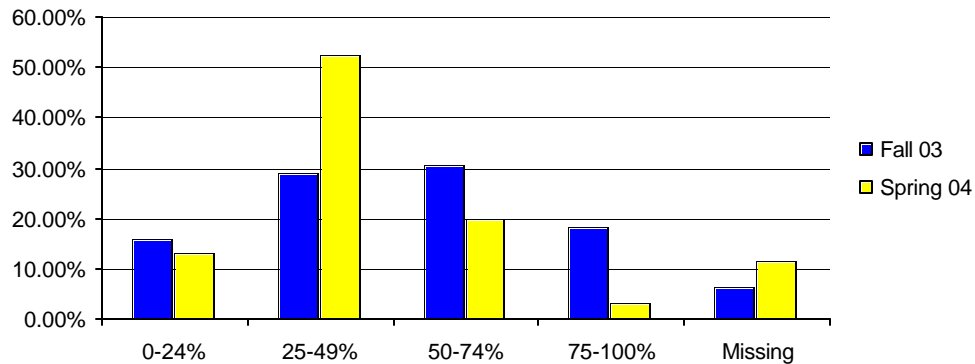
By Class Rank Quintiles

	Fall 2003		Spring 2004	
	Count	Percent	Count	Percent
0-19%	85	10.60%	5	8.20%
20-39%	157	19.58%	20	32.79%
40-59%	219	27.31%	22	36.07%
60-79%	179	22.32%	5	8.20%
80-100%	110	13.72%	2	3.28%
Missing	52	6.48%	7	11.48%
Total	802	100.00%	61	100.00%



By Class Rank Quartiles

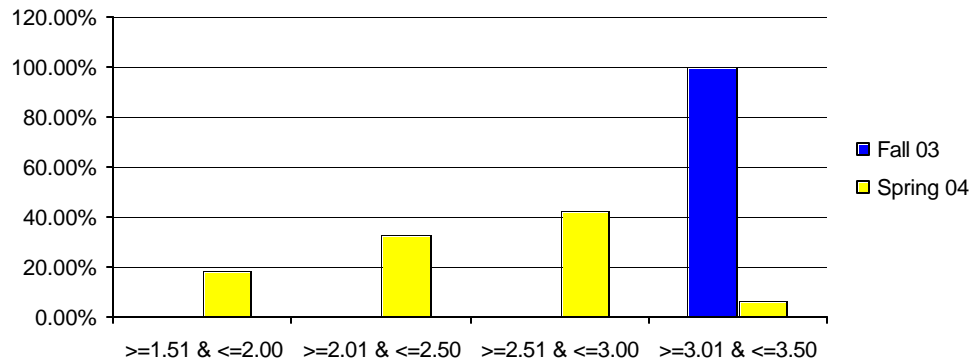
	Fall 2003		Spring 2004	
	Count	Percent	Count	Percent
0-24%	127	15.84%	8	13.11%
25-49%	232	28.93%	32	52.46%
50-74%	244	30.42%	12	19.67%
75-100%	147	18.33%	2	3.28%
Missing	52	6.48%	7	11.48%
Total	802	100.00%	61	100.00%



First Time Freshmen Enrolled Fall 2003 & Spring 2004

By Predicted GPA

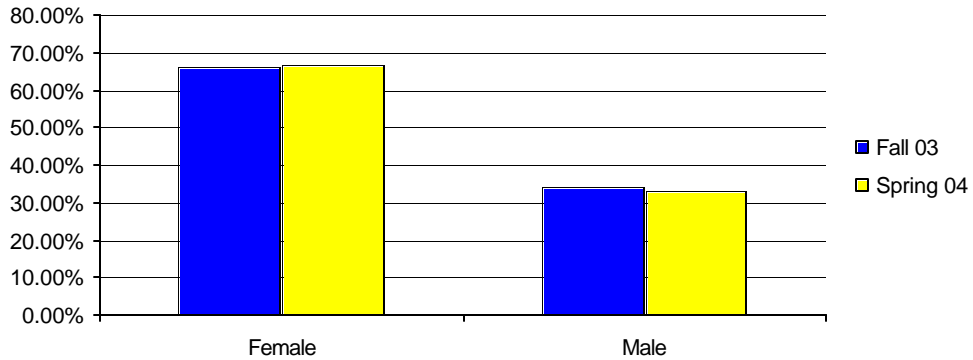
	Fall 2003		Spring 2004	
	Count	Percent	Count	Percent
>=1.51 & <=2.00	0	0.00%	11	18.03%
>=2.01 & <=2.50	0	0.00%	20	32.79%
>=2.51 & <=3.00	1	0.12%	26	42.62%
>=3.01 & <=3.50	801	99.88%	4	6.56%
Total	802	100.00%	61	100.00%



Enrolled Students Fall 2003 & Spring 2004

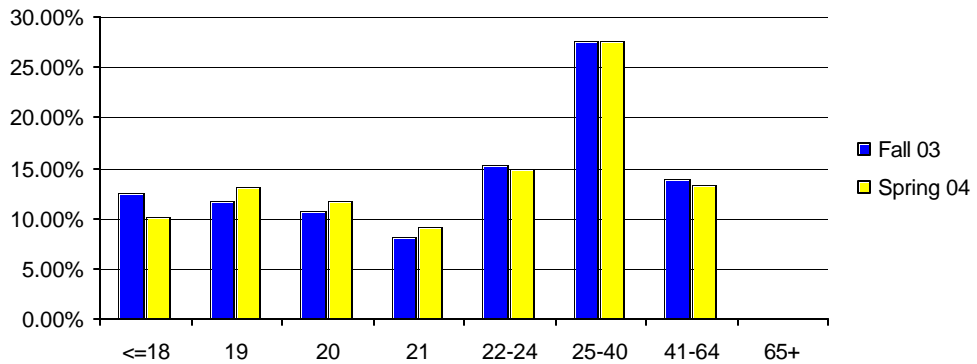
By Gender

	Fall 2003		Spring 2004	
	Count	Percent	Count	Percent
Female	3514	65.94%	3246	66.93%
Male	1815	34.06%	1604	33.07%
Total	5329	100.00%	4850	100.00%



By Age

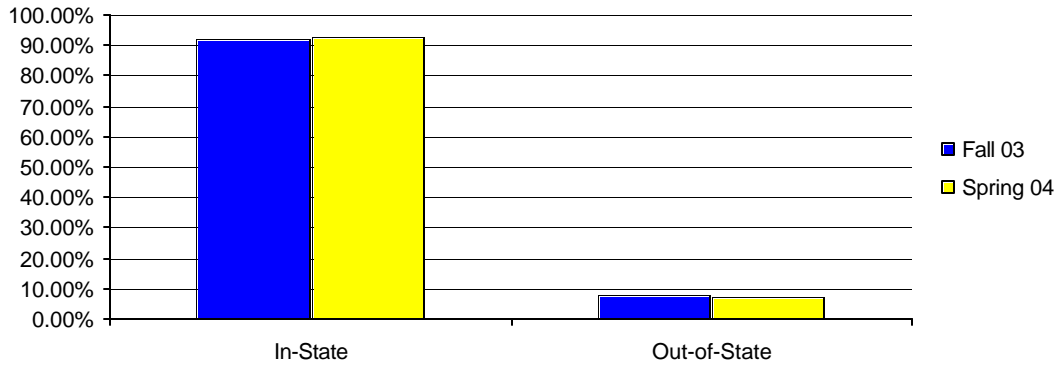
	Fall 2003		Spring 2004	
	Count	Percent	Count	Percent
<=18	667	12.52%	489	10.08%
19	622	11.67%	635	13.09%
20	572	10.73%	571	11.77%
21	438	8.22%	447	9.22%
22-24	814	15.27%	722	14.89%
25-40	1473	27.64%	1338	27.59%
41-64	740	13.89%	647	13.34%
65+	3	0.06%	1	0.02%
Total	5329	100.00%	4850	100.00%



Enrolled Students Fall 2003 & Spring 2004

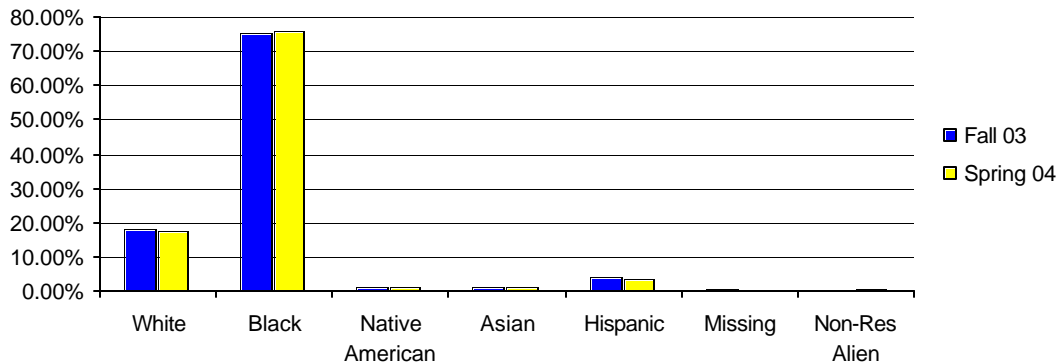
By Residence

	Fall 2003		Spring 2004	
	Count	Percent	Count	Percent
In-State	4891	91.78%	4501	92.80%
Out-of-State	438	8.22%	349	7.20%
Total	5329	100.00%	4850	100.00%



By Race

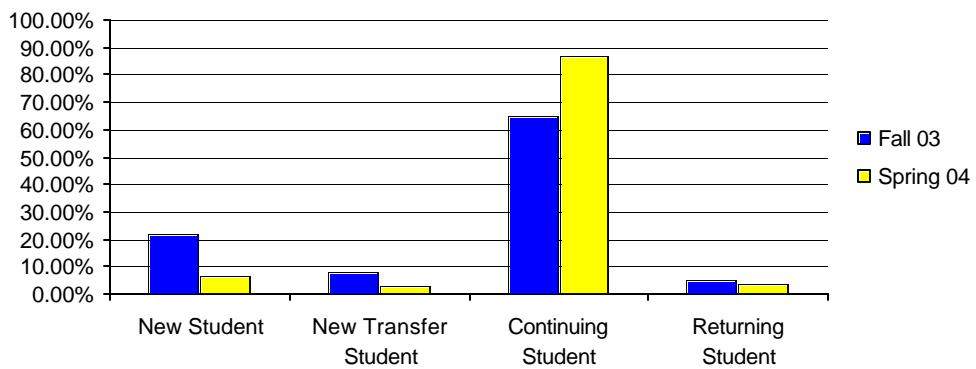
	Fall 2003		Spring 2004	
	Count	Percent	Count	Percent
White	967	18.15%	861	17.75%
Black	4010	75.25%	3679	75.86%
Native American	61	1.14%	53	1.09%
Asian	60	1.13%	54	1.11%
Hispanic	209	3.92%	180	3.71%
Missing	18	0.34%	6	0.12%
Non-Res Alien	4	0.08%	17	0.35%
Total	5329	100.00%	4850	100.00%



Enrolled Students Fall 2003 & Spring 2004

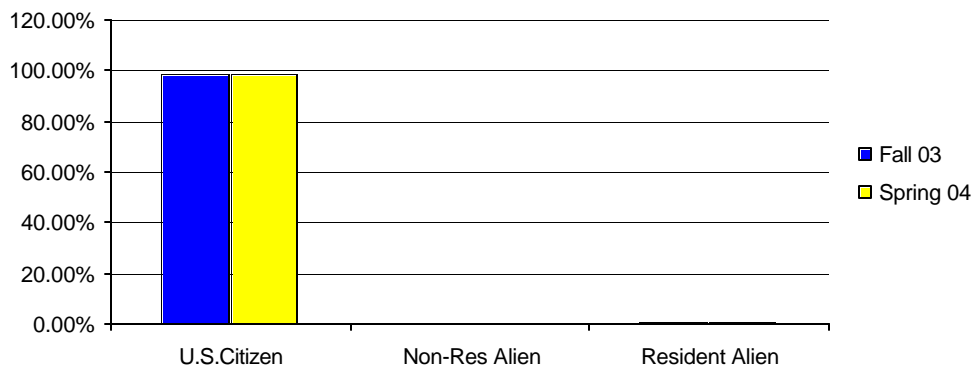
By Enrolled Status

	Fall 2003		Spring 2004	
	Count	Percent	Count	Percent
New Student	1158	21.73%	315	6.49%
New Transfer Student	446	8.37%	155	3.20%
Continuing Student	3462	64.97%	4211	86.82%
Returning Student	257	4.82%	169	3.48%
Unclassified	6	0.11%	0	0.00%
Total	5329	100.00%	4850	100.00%



By Citizenship

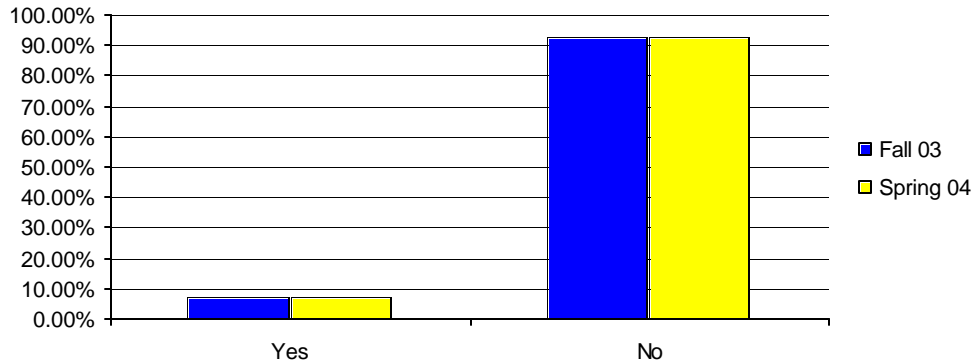
	Fall 2003		Spring 2004	
	Count	Percent	Count	Percent
U.S.Citizen	5255	98.61%	4783	98.62%
Non-Res Alien	18	0.34%	17	0.35%
Resident Alien	56	1.05%	50	1.03%
Total	5329	100.00%	4850	100.00%



Enrolled Students Fall 2003 & Spring 2004

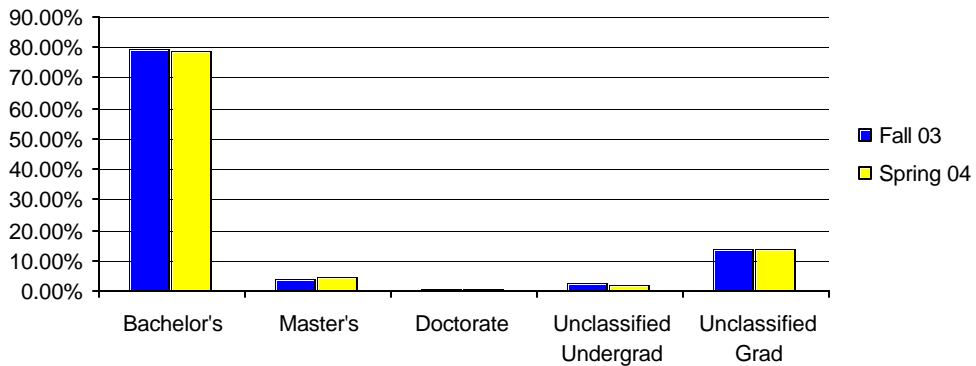
By Teacher Certification

	Fall 2003		Spring 2004	
	Count	Percent	Count	Percent
Yes	374	7.02%	341	7.03%
No	4955	92.98%	4509	92.97%
Total	5329	100.00%	4850	100.00%



By Degree Intent

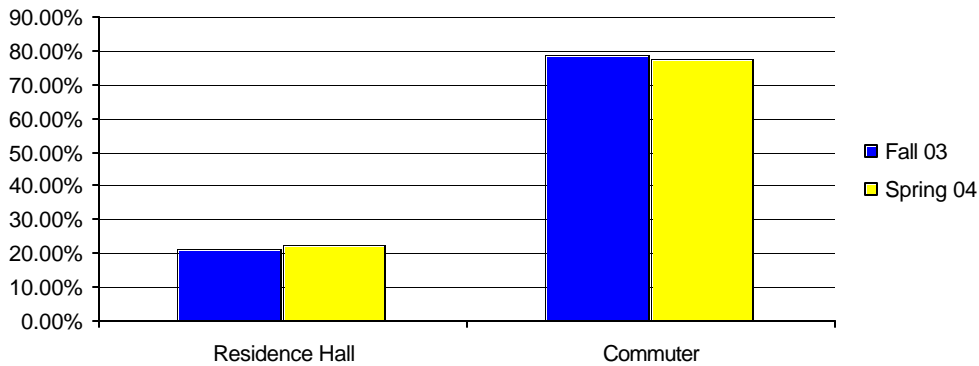
	Fall 2003		Spring 2004	
	Count	Percent	Count	Percent
Bachelor's	4226	79.30%	3833	79.03%
Master's	207	3.88%	214	4.41%
Doctorate	43	0.81%	37	0.76%
Unclassified Undergrad	135	2.53%	87	1.79%
Unclassified Grad	718	13.47%	679	14.00%
Total	5329	100.00%	4850	100.00%



Enrolled Students Fall 2003 & Spring 2004

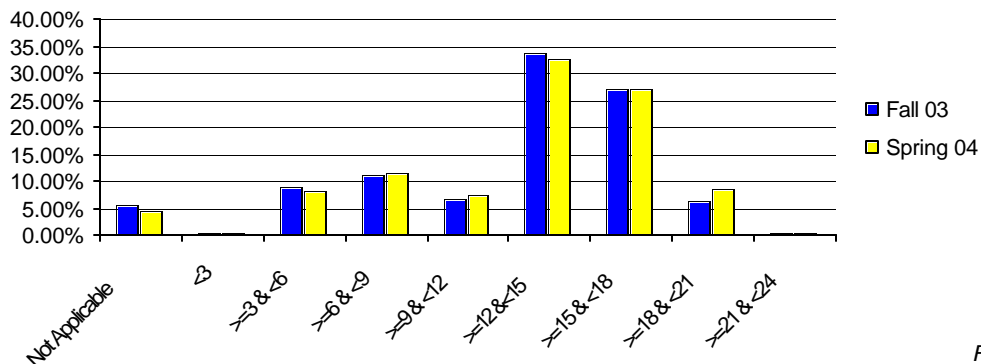
By Housing Code

	Fall 2003		Spring 2004	
	Count	Percent	Count	Percent
Residence Hall	1134	21.28%	1093	22.54%
Commuter	4195	78.72%	3757	77.46%
Total	5329	100.00%	4850	100.00%



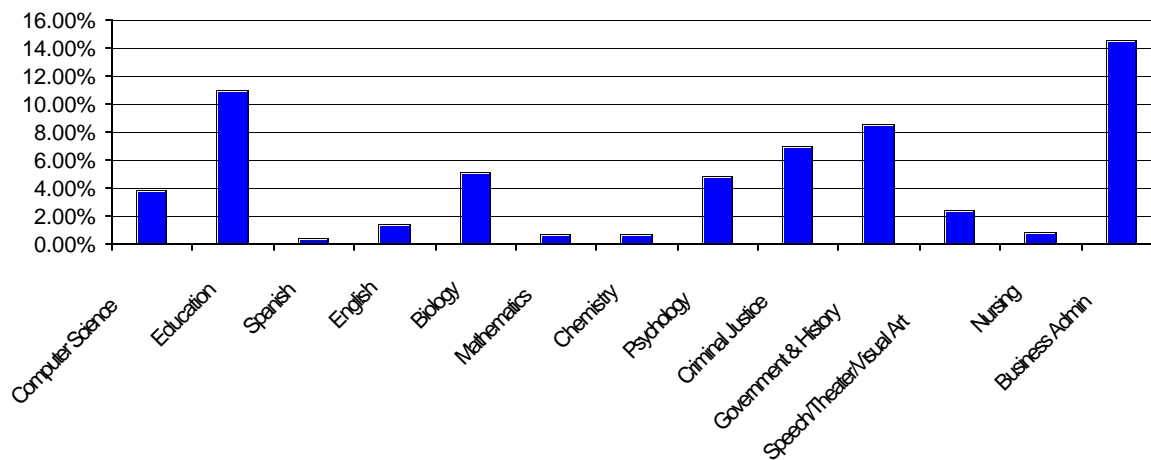
By Resident Credit Hours

	Fall 2003		Spring 2004	
	Count	Percent	Count	Percent
Not Applicable	289	5.42%	210	4.33%
<3	10	0.19%	9	0.19%
>=3 & <6	480	9.01%	401	8.27%
>=6 & <9	599	11.24%	548	11.30%
>=9 & <12	364	6.83%	353	7.28%
>=12 & <15	1791	33.61%	1580	32.58%
>=15 & <18	1435	26.93%	1315	27.11%
>=18 & <21	338	6.34%	408	8.41%
>=21 & <24	23	0.43%	26	0.54%
Total	5329	100.00%	4850	100.00%



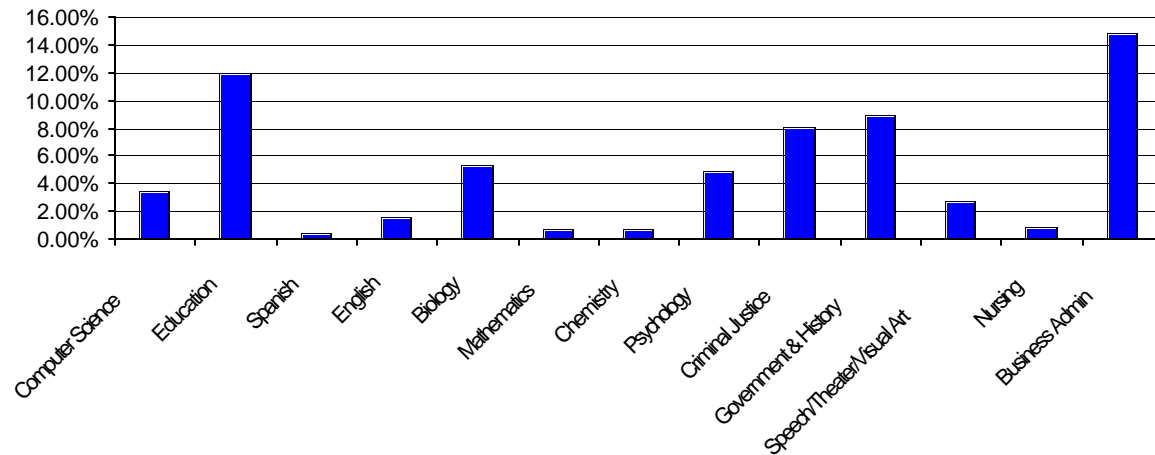
Fall 2003 Enrolled Students Undergraduate Class Level

	First Year		Second Year		Third Year		Fourth Year		Unclassified		Total	
	Count	Percent	Count	Percent	Count	Percent	Count	Percent	Count	Percent	Count	Percent
Undecided/Undeclared	1107	69.23%	247	30.42%	90	12.55%	92	8.38%	135	100.00%	1671	38.32%
Computer Science	25	1.56%	47	5.79%	43	6.00%	52	4.74%	0	0.00%	167	3.83%
Education	84	5.25%	100	12.32%	106	14.78%	189	17.21%	0	0.00%	479	10.98%
Spanish	6	0.38%	5	0.62%	5	0.70%	5	0.46%	0	0.00%	21	0.48%
English	6	0.38%	16	1.97%	16	2.23%	25	2.28%	0	0.00%	63	1.44%
Biology	71	4.44%	57	7.02%	43	6.00%	53	4.83%	0	0.00%	224	5.14%
Mathematics	8	0.50%	7	0.86%	6	0.84%	13	1.18%	0	0.00%	34	0.78%
Chemistry	5	0.31%	5	0.62%	6	0.84%	13	1.18%	0	0.00%	29	0.66%
Psychology	38	2.38%	41	5.05%	47	6.56%	87	7.92%	0	0.00%	213	4.88%
Criminal Justice	44	2.75%	63	7.76%	95	13.25%	105	9.56%	0	0.00%	307	7.04%
Government & History	67	4.19%	63	7.76%	80	11.16%	164	14.94%	0	0.00%	374	8.58%
Speech/Theater/Visual Art	20	1.25%	26	3.20%	24	3.35%	37	3.37%	0	0.00%	107	2.45%
Nursing	10	0.63%	3	0.37%	8	1.12%	15	1.37%	0	0.00%	36	0.83%
Business Admin	108	6.75%	132	16.26%	148	20.64%	248	22.59%	0	0.00%	636	14.58%
Total	1599	100.00%	812	100.00%	717	100.00%	1098	100.00%	135	100.00%	4361	100.00%
Percent Per Class Level		36.67%		18.62%		16.44%		25.18%		3.10%		100.00%



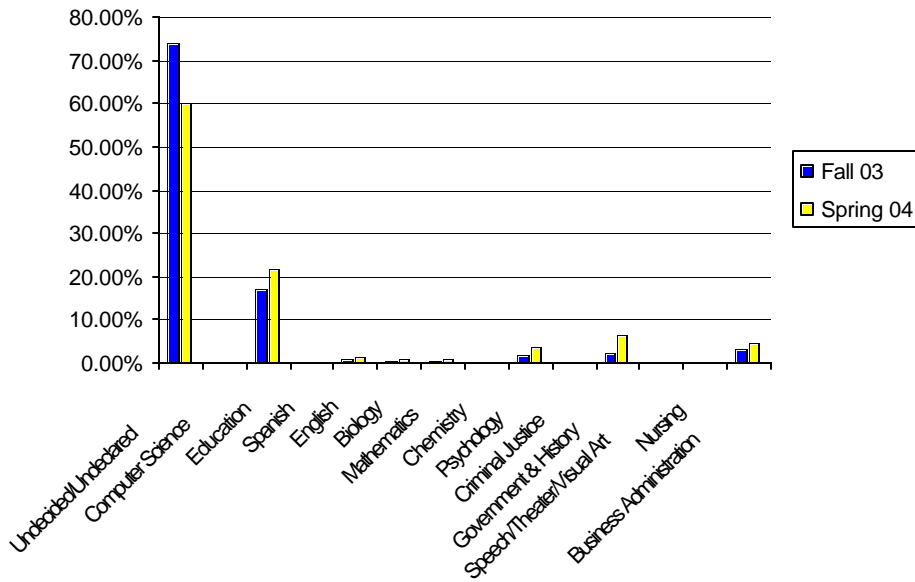
Spring 2004 Enrolled Students Undergraduate Class Level

	First Year		Second Year		Third Year		Fourth Year		Unclassified		Total	
	Count	Percent	Count	Percent	Count	Percent	Count	Percent	Count	Percent	Count	Percent
Undecided/Undeclared	815	75.12%	276	31.26%	109	13.01%	95	9.25%	84	96.55%	1379	35.18%
Computer Science	11	1.01%	44	4.98%	41	4.89%	40	3.89%	1	1.15%	137	3.49%
Education	54	4.98%	96	10.87%	138	16.47%	179	17.43%	2	2.30%	469	11.96%
Spanish	1	0.09%	2	0.23%	9	1.07%	6	0.58%		0.00%	18	0.46%
English	2	0.18%	12	1.36%	20	2.39%	26	2.53%		0.00%	60	1.53%
Biology	39	3.59%	70	7.93%	57	6.80%	45	4.38%		0.00%	211	5.38%
Mathematics	3	0.28%	7	0.79%	6	0.72%	12	1.17%		0.00%	28	0.71%
Chemistry	3	0.28%	8	0.91%	7	0.84%	13	1.27%		0.00%	31	0.79%
Psychology	16	1.47%	46	5.21%	50	5.97%	80	7.79%		0.00%	192	4.90%
Criminal Justice	34	3.13%	79	8.95%	102	12.17%	102	9.93%		0.00%	317	8.09%
Government & History	40	3.69%	66	7.47%	91	10.86%	155	15.09%		0.00%	352	8.98%
Speech/Theater/Visual Art	13	1.20%	30	3.40%	31	3.70%	35	3.41%		0.00%	109	2.78%
Nursing	3	0.28%	5	0.57%	9	1.07%	17	1.66%		0.00%	34	0.87%
Business Admin	51	4.70%	142	16.08%	168	20.05%	222	21.62%		0.00%	583	14.87%
Total	1085	100.00%	883	100.00%	838	100.00%	1027	100.00%	87	100.00%	3920	100.00%
Percent Per Class Level		27.68%		22.53%		21.38%		26.20%		2.22%		100.00%



Fall 2003-Spring 2004 Enrolled Students Graduate Majors

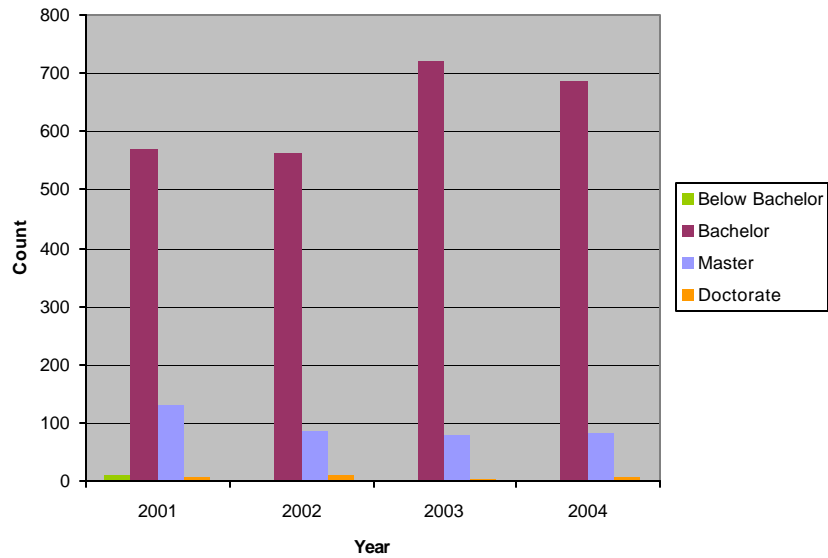
	Fall 2003		Spring 2004	
	Count	Percent	Count	Percent
Undecided/Undeclared	718	74.17%	560	60.22%
Computer Science	0	0.00%	0	0.00%
Education	164	16.94%	203	21.83%
Spanish	0	0.00%	0	0.00%
English	7	0.72%	11	1.18%
Biology	3	0.31%	9	0.97%
Mathematics	4	0.41%	10	1.08%
Chemistry	0	0.00%	0	0.00%
Psychology	18	1.86%	33	3.55%
Criminal Justice	0	0.00%	0	0.00%
Government & History	21	2.17%	62	6.67%
Speech/Theater/Visual Art	0	0.00%	0	0.00%
Nursing	0	0.00%	0	0.00%
Business Administration	33	3.41%	42	4.52%
Total	968	100.00%	930	100.00%



Degrees Conferred Between July 1 and June 30 Comparison

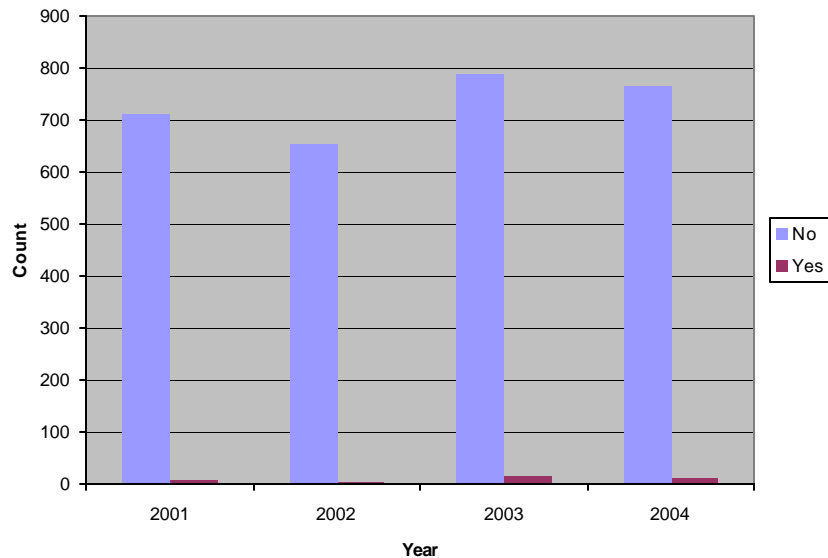
Degrees Conferred By Degree Intent

	2001	2002	2003	2004
Below Bachelor	12	0	0	0
Bachelor	571	563	720	687
Master	129	86	79	82
Doctorate	6	10	4	7



Degrees Conferred By Double Major

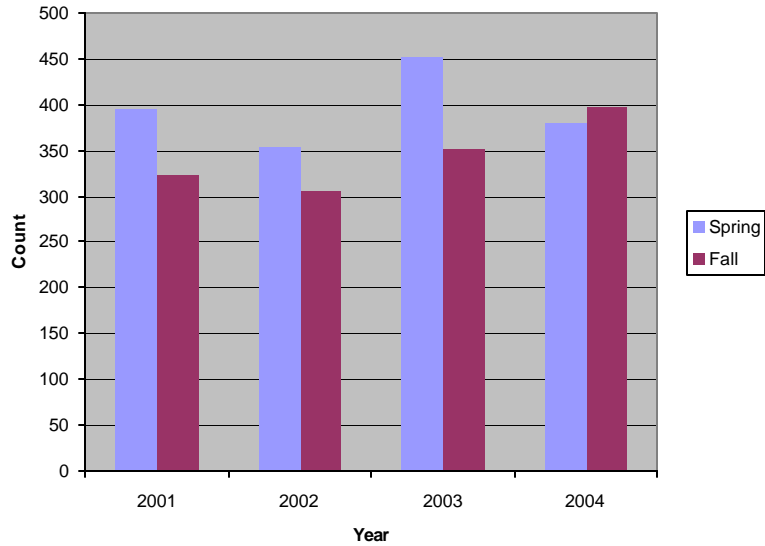
	2001	2002	2003	2004
No	710	654	788	765
Yes	8	5	15	11



Degrees Conferred Between July 1 and June 30 Comparison

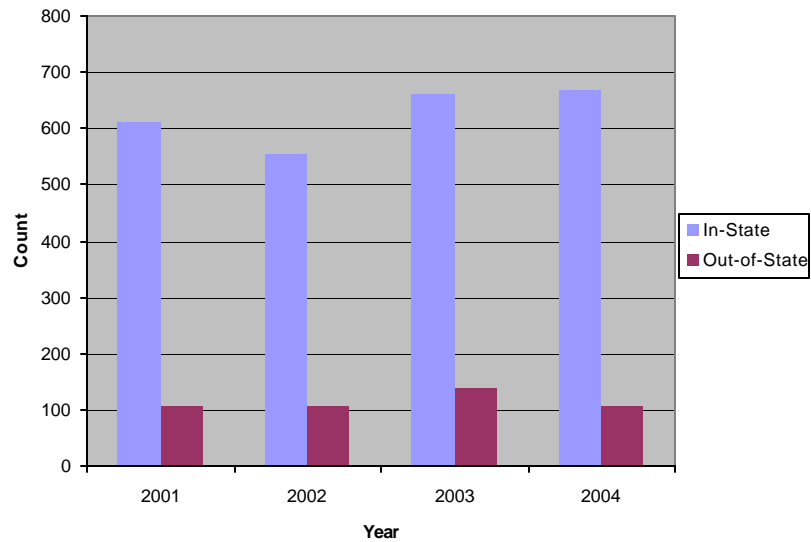
Degrees Conferred By Graduation Term

	2001	2002	2003	2004
Spring	395	354	451	379
Fall	323	305	352	397



Degrees Conferred By Residence

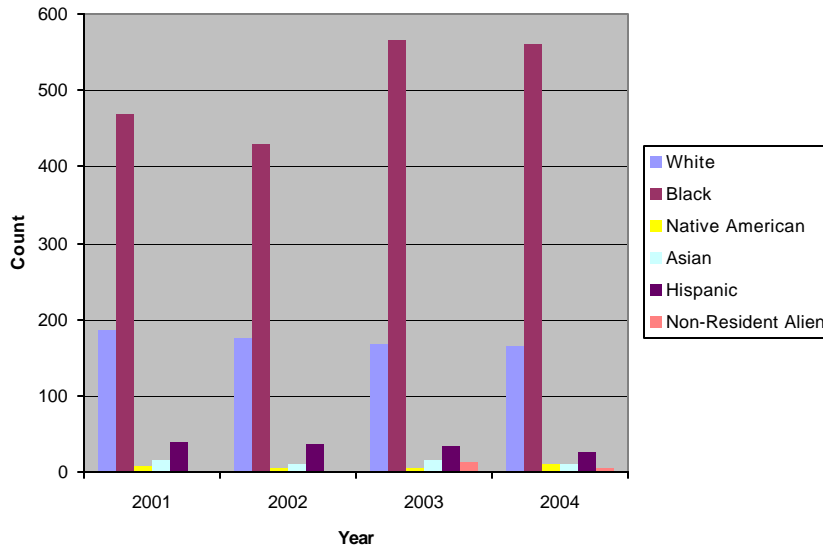
	2001	2002	2003	2004
In-State	610	554	663	669
Out-of-State	108	105	140	107



Degrees Conferred Between July 1 and June 30 Comparison

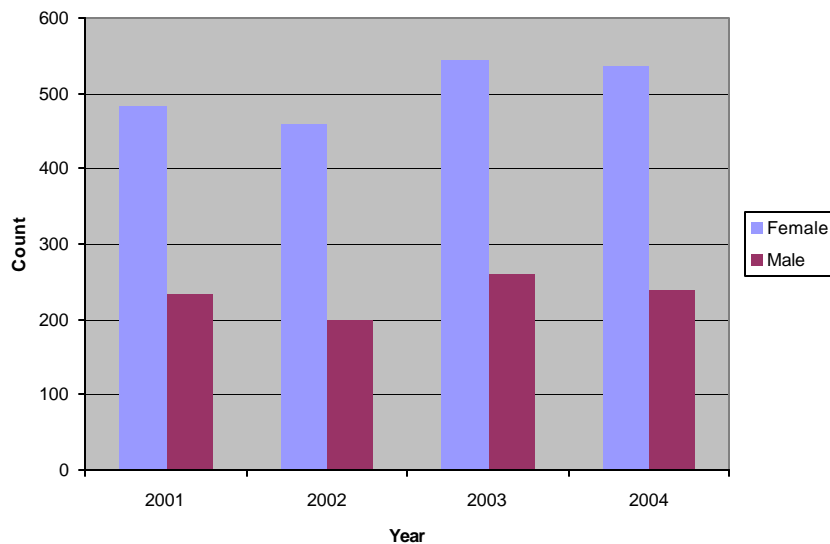
Degrees Conferred By Race

	2001	2002	2003	2004
White	185	176	168	164
Black	468	430	566	560
Native American	8	6	5	11
Asian	16	11	16	10
Hispanic	40	36	34	27
Non-Resident Alien	1	0	14	4



Degrees Conferred By Gender

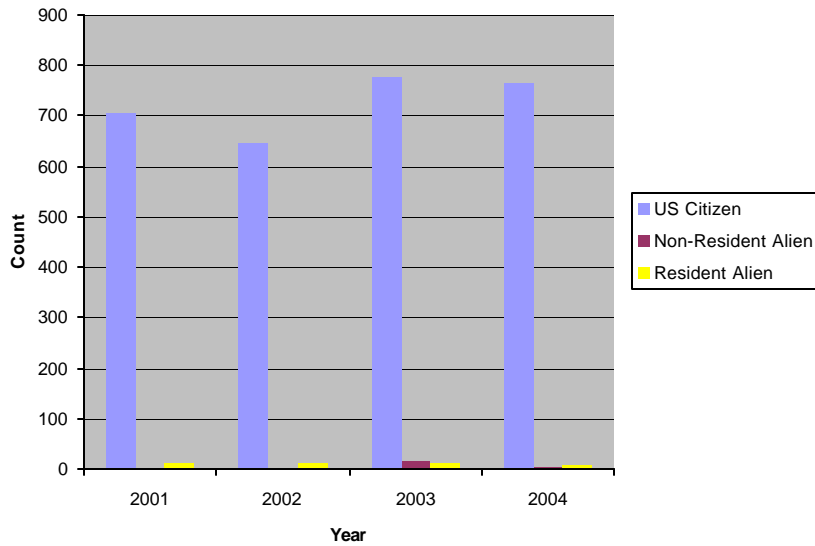
	2001	2002	2003	2004
Female	484	459	543	537
Male	234	200	260	239



Degrees Conferred Between July 1 and June 30 Comparison

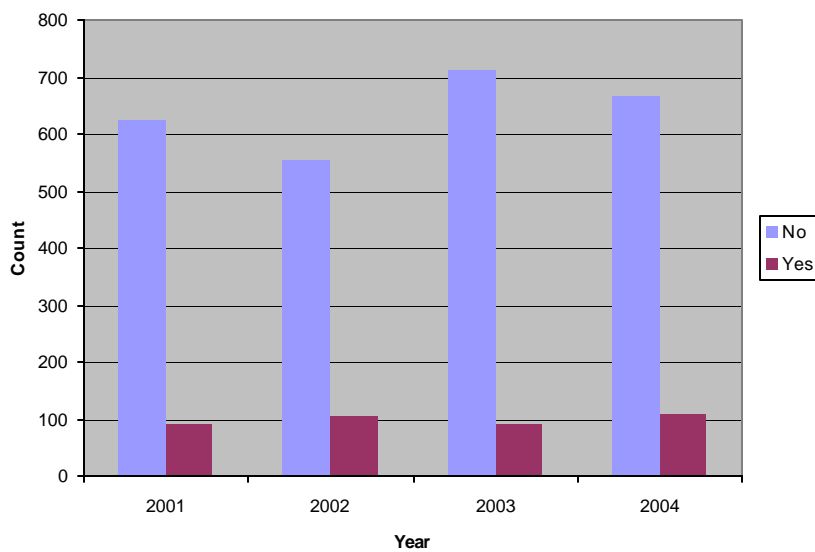
Degrees Conferred By Citizenship

	2001	2002	2003	2004
US Citizen	707	648	779	766
Non-Resident Alie	1	0	14	4
Resident Alien	10	11	10	6



Degrees Conferred By Teacher Certification

	2001	2002	2003	2004
No	626	553	711	666
Yes	92	106	92	110



**Degrees Conferred Between July 1, 2003 and June 30, 2004
By Residence and Degree Level**

	Bachelor's		Master's		Doctorate		Total	
	Count	Percent	Count	Percent	Count	Percent	Count	Percent
Alamance	2	0.26%	0	0.00%	0	0.00%	2	0.26%
Anson	2	0.26%	0	0.00%	0	0.00%	2	0.26%
Bertie	4	0.52%	0	0.00%	0	0.00%	4	0.52%
Bladen	8	1.03%	3	0.39%	0	0.00%	11	1.42%
Brunswick	4	0.52%	0	0.00%	1	0.13%	5	0.64%
Buncombe	1	0.13%	0	0.00%	0	0.00%	1	0.13%
Carteret	5	0.64%	0	0.00%	0	0.00%	5	0.64%
Cleveland	2	0.26%	1	0.13%	0	0.00%	3	0.39%
Columbus	9	1.16%	1	0.13%	0	0.00%	10	1.29%
Craven	3	0.39%	0	0.00%	0	0.00%	3	0.39%
Cumberland	320	41.24%	41	5.28%	3	0.39%	364	46.91%
Davidson	1	0.13%	0	0.00%	0	0.00%	1	0.13%
Duplin	6	0.77%	1	0.13%	0	0.00%	7	0.90%
Durham	6	0.77%	0	0.00%	0	0.00%	6	0.77%
Edgecombe	9	1.16%	0	0.00%	0	0.00%	9	1.16%
Forsyth	3	0.39%	1	0.13%	0	0.00%	4	0.52%
Franklin	1	0.13%	0	0.00%	0	0.00%	1	0.13%
Gaston	1	0.13%	0	0.00%	0	0.00%	1	0.13%
Gates	1	0.13%	0	0.00%	0	0.00%	1	0.13%
Granville	1	0.13%	0	0.00%	0	0.00%	1	0.13%
Guilford	6	0.77%	1	0.13%	0	0.00%	7	0.90%
Halifax	2	0.26%	0	0.00%	0	0.00%	2	0.26%
Harnett	23	2.96%	4	0.52%	0	0.00%	27	3.48%
Hoke	15	1.93%	3	0.39%	0	0.00%	18	2.32%
Johnston	6	0.77%	1	0.13%	1	0.13%	8	1.03%
Jones	2	0.26%	0	0.00%	0	0.00%	2	0.26%
Lee	9	1.16%	3	0.39%	0	0.00%	12	1.55%
Lenoir	5	0.64%	0	0.00%	0	0.00%	5	0.64%
Martin	3	0.39%	0	0.00%	0	0.00%	3	0.39%
Mecklenburg	14	1.80%	1	0.13%	0	0.00%	15	1.93%
Montgomery	1	0.13%	0	0.00%	0	0.00%	1	0.13%
Moore	6	0.77%	1	0.13%	0	0.00%	7	0.90%
Nash	2	0.26%	0	0.00%	0	0.00%	2	0.26%
New Hanover	3	0.39%	0	0.00%	0	0.00%	3	0.39%
Northampton	2	0.26%	0	0.00%	0	0.00%	2	0.26%
Onslow	7	0.90%	0	0.00%	0	0.00%	7	0.90%
Orange	1	0.13%	0	0.00%	0	0.00%	1	0.13%
Pender	4	0.52%	0	0.00%	0	0.00%	4	0.52%
Pitt	2	0.26%	0	0.00%	1	0.13%	3	0.39%
Richmond	2	0.26%	4	0.52%	0	0.00%	6	0.77%
Robeson	22	2.84%	5	0.64%	0	0.00%	27	3.48%
Rutherford	1	0.13%	0	0.00%	0	0.00%	1	0.13%
Sampson	22	2.84%	3	0.39%	0	0.00%	25	3.22%
Scotland	9	1.16%	2	0.26%	0	0.00%	11	1.42%
Stanly	3	0.39%	0	0.00%	0	0.00%	3	0.39%
Union	2	0.26%	0	0.00%	0	0.00%	2	0.26%
Wake	10	1.29%	2	0.26%	1	0.13%	13	1.68%
Worren	1	0.13%	0	0.00%	0	0.00%	1	0.13%
Washington	1	0.13%	0	0.00%	0	0.00%	1	0.13%
Wayne	4	0.52%	1	0.13%	0	0.00%	5	0.64%

Note: 2004 degrees conferred are preliminary counts and subject to change.

Wilson	4	0.52%	0	0.00%	0	0.00%	4	0.52%
Total County	583	75.13%	79	10.18%	7	0.90%	669	86.21%

**Degrees Conferred Between July 1, 2003 and June 30, 2004
By Residence and Degree Level**

	Bachelor's		Master's		Doctorate		Total	
	Count	Percent	Count	Percent	Count	Percent	Count	Percent
Alabama	5	0.64%	0	0.00%	0	0.00%	5	0.64%
Alaska	1	0.13%	0	0.00%	0	0.00%	1	0.13%
Arizona	1	0.13%	0	0.00%	0	0.00%	1	0.13%
California	3	0.39%	2	0.26%	0	0.00%	5	0.64%
Colorado	1	0.13%	0	0.00%	0	0.00%	1	0.13%
Connecticut	1	0.13%	0	0.00%	0	0.00%	1	0.13%
Dist. Of Columbia	2	0.26%	0	0.00%	0	0.00%	2	0.26%
Florida	9	1.16%	0	0.00%	0	0.00%	9	1.16%
Georgia	7	0.90%	0	0.00%	0	0.00%	7	0.90%
Illinois	4	0.52%	1	0.13%	0	0.00%	5	0.64%
Kansas	2	0.26%	0	0.00%	0	0.00%	2	0.26%
Kentucky	2	0.26%	0	0.00%	0	0.00%	2	0.26%
Louisiana	2	0.26%	0	0.00%	0	0.00%	2	0.26%
Maryland	5	0.64%	0	0.00%	0	0.00%	5	0.64%
Massachusetts	1	0.13%	0	0.00%	0	0.00%	1	0.13%
Michigan	2	0.26%	0	0.00%	0	0.00%	2	0.26%
Minnesota	1	0.13%	0	0.00%	0	0.00%	1	0.13%
Mississippi	1	0.13%	0	0.00%	0	0.00%	1	0.13%
Missouri	1	0.13%	0	0.00%	0	0.00%	1	0.13%
Montana	1	0.13%	0	0.00%	0	0.00%	1	0.13%
New Jersey	3	0.39%	0	0.00%	0	0.00%	3	0.39%
New York	5	0.64%	0	0.00%	0	0.00%	5	0.64%
Ohio	3	0.39%	0	0.00%	0	0.00%	3	0.39%
Oklahoma	2	0.26%	0	0.00%	0	0.00%	2	0.26%
Oregon	1	0.13%	0	0.00%	0	0.00%	1	0.13%
Pennsylvania	2	0.26%	0	0.00%	0	0.00%	2	0.26%
South Carolina	13	1.68%	0	0.00%	0	0.00%	13	1.68%
Tennessee	1	0.13%	0	0.00%	0	0.00%	1	0.13%
Texas	3	0.39%	0	0.00%	0	0.00%	3	0.39%
Virginia	6	0.77%	0	0.00%	0	0.00%	6	0.77%
Washington	2	0.26%	0	0.00%	0	0.00%	2	0.26%
West Virginia	1	0.13%	0	0.00%	0	0.00%	1	0.13%
Wisconsin	1	0.13%	0	0.00%	0	0.00%	1	0.13%
Wyoming	1	0.13%	0	0.00%	0	0.00%	1	0.13%
Foreign	8	1.03%	0	0.00%	0	0.00%	8	1.03%
Total State	104	13.40%	3	0.39%	0	0.00%	107	13.79%
Total Residence	687	88.53%	82	10.57%	7	0.90%	776	100.00%

Note: 2004 degrees conferred are preliminary counts and subject to change.

Fayetteville State University

Retention, Graduation and Persistence Rates of First-Time Full-Time Freshmen

Yr of Entry	Number In Class	Original Institution (FSU)										Any UNC Institution									
		After Year 1	After Year 2	After Year 3	4	5	6	7	8	9	10	After Year 1	After Year 2	After Year 3	4	5	6	7	8	9	10
Panel A - Retention																					
1987	464	56.0	37.3	31.5	22.2	10.6	3.9	2.4	1.7	0.9	0.2	59.1	40.1	34.5	25.2	12.1	5.4	3.7	2.2	1.7	1.3
1988	423	74.7	58.9	52.7	35.7	12.8	6.6	3.5	2.4	0.7	0.5	76.8	62.2	55.6	38.8	14.4	8.0	5.2	3.1	2.4	2.1
1989	526	69.2	53.8	45.4	32.9	12.9	4.8	2.5	1.1	0.6	1.0	73.4	60.5	50.4	37.1	15.6	7.0	3.4	2.7	1.5	1.5
1990	393	72.3	59.0	50.4	29.3	12.7	5.6	2.3	1.0	1.0	0.5	76.1	65.4	56.2	34.1	16.3	7.9	4.3	1.5	1.5	1.0
1991	440	77.5	63.0	55.2	30.7	10.7	4.3	2.3	2.5	1.8	2.5	79.8	68.0	60.5	35.9	14.1	6.8	4.3	3.6	2.5	3.0
1992	345	74.8	59.4	51.6	27.2	8.7	3.5	2.9	0.9	1.2	1.7	79.4	65.5	56.8	31.9	12.8	5.8	4.6	1.4	2.0	2.0
1993	444	72.5	57.0	47.5	29.3	8.3	4.7	2.3	1.6	1.4	2.0	78.6	64.2	54.1	34.5	10.4	5.4	3.2	2.0	2.0	2.9
1994	443	64.6	50.8	41.1	21.2	7.4	3.2	2.7	1.6	2.0	.	67.5	54.4	45.4	25.3	10.2	5.9	3.8	2.3	2.9	.
1995	380	69.7	51.6	47.4	27.9	8.9	3.7	3.2	1.3	.	.	71.8	57.6	51.6	31.8	12.6	5.5	5.0	2.9	.	.
1996	587	71.2	55.7	46.3	18.2	7.7	3.2	2.0	.	.	.	73.8	60.8	50.9	23.2	10.7	4.3	3.1	.	.	.
1997	511	72.8	57.5	48.1	28.4	15.1	5.9	76.5	62.4	52.4	32.3	17.0	7.4
1998	519	74.2	54.9	46.4	31.8	13.3	77.3	59.3	50.5	35.6	16.6
1999	799	72.6	60.2	52.9	25.0	75.2	65.7	58.2	29.9
2000	535	71.0	56.8	48.6	76.1	63.6	55.5
2001	763	73.9	55.8	76.5	59.2
2002	734	73.4	75.3
Panel B - Graduation																					
1987	464	0.0	0.0	0.2	7.3	14.7	20.9	22.0	23.3	23.5	24.1	0.0	0.0	0.2	7.5	15.5	22.2	23.7	25.4	25.9	26.5
1988	423	0.0	0.0	0.2	11.1	31.0	36.4	37.8	39.0	40.4	41.1	0.0	0.0	0.2	11.3	31.9	37.6	39.2	41.1	42.6	43.3
1989	526	0.0	0.0	0.0	10.3	25.3	33.1	35.4	36.5	37.3	37.5	0.0	0.0	0.0	10.5	26.4	35.2	38.0	39.2	40.3	40.7
1990	393	0.0	0.0	0.0	14.2	28.2	34.9	38.4	38.7	39.2	39.2	0.0	0.0	0.0	15.5	30.8	38.7	43.3	44.3	44.8	45.0
1991	440	0.0	0.0	0.9	19.5	37.5	43.2	45.2	46.1	46.1	46.6	0.0	0.0	0.9	19.8	39.3	46.1	48.6	50.0	50.7	51.1
1992	345	0.0	0.0	1.4	17.7	33.6	38.3	39.1	40.3	40.9	40.9	0.0	0.0	1.4	18.3	34.5	40.0	41.4	43.8	44.3	44.6
1993	444	0.0	0.0	0.5	14.2	30.6	34.7	36.9	37.2	38.1	38.7	0.0	0.0	0.5	14.6	33.3	38.1	40.8	41.2	42.1	43.2
1994	443	0.0	0.0	0.7	16.0	29.6	33.0	33.9	35.0	35.4	.	0.0	0.0	0.7	16.3	30.2	33.9	36.1	37.7	38.1	.
1995	380	0.0	0.0	0.3	14.2	31.8	37.1	37.4	38.2	.	.	0.0	0.0	0.3	14.5	32.4	38.9	39.5	40.8	.	.
1996	587	0.0	0.0	0.5	23.0	34.2	38.5	39.5	.	.	.	0.0	0.0	0.9	23.7	36.3	41.6	42.8	.	.	.
1997	511	0.0	0.0	0.8	18.0	31.5	38.0	0.0	0.0	0.8	18.4	32.7	40.3
1998	519	0.0	0.0	0.0	12.1	28.5	0.0	0.0	0.0	12.5	29.5
1999	799	0.0	0.0	0.4	24.4	0.0	0.0	0.4	24.9
2000	535	0.0	0.0	0.6	0.0	0.0	0.7
2001	763	0.0	0.0	0.0	0.0
2002	734	0.0	0.0
Panel C - Persistence																					
1987	464	56.0	37.3	31.7	29.5	25.2	24.8	24.4	25.0	24.4	24.4	59.1	40.1	34.7	32.8	27.6	27.6	27.4	27.6	27.6	27.8
1988	423	74.7	58.9	53.0	46.8	43.7	43.0	41.4	41.4	41.1	41.6	76.8	62.2	55.8	50.1	46.3	45.6	44.4	44.2	44.9	45.4
1989	526	69.2	53.8	45.4	43.2	38.2	37.8	37.8	37.6	37.8	38.4	73.4	60.5	50.4	47.5	42.0	42.2	41.4	41.8	41.8	42.2
1990	393	72.3	59.0	50.4	43.5	41.0	40.5	40.7	39.7	40.2	39.7	76.1	65.4	56.2	49.6	47.1	46.6	47.6	45.8	46.3	46.1
1991	440	77.5	63.0	56.1	50.2	48.2	47.5	47.5	48.6	48.0	49.1	79.8	68.0	61.4	55.7	53.4	53.0	53.0	53.6	53.2	54.1
1992	345	74.8	59.4	53.0	44.9	42.3	41.7	42.0	41.2	42.0	42.6	79.4	65.5	58.3	50.1	47.2	45.8	46.1	45.2	46.4	46.7
1993	444	72.5	57.0	48.0	43.5	39.0	39.4	39.2	38.7	39.4	40.8	78.6	64.2	54.5	49.1	43.7	43.5	43.9	43.2	44.1	46.2
1994	443	64.6	50.8	41.8	37.2	37.0	36.1	36.6	36.6	37.5	.	67.5	54.4	46.0	41.5	40.4	39.7	40.0	40.0	41.1	.
1995	380	69.7	51.6	47.6	42.1	40.8	40.8	40.5	39.5	.	.	71.8	57.6	51.8	46.3	45.0	44.5	44.5	43.7	.	.
1996	587	71.2	55.7	46.8	41.2	41.9	41.7	41.6	.	.	.	73.8	60.8	51.8	46.8	47.0	45.8	45.8	.	.	.
1997	511	72.8	57.5	48.9	46.4	46.6	43.8	76.5	62.4	53.2	50.7	49.7	47.7
1998	519	74.2	54.9	46.4	43.9	41.8	77.3	59.3	50.5	48.2	46.1
1999	799	72.6	60.2	53.3	49.4	75.2	65.7	58.6	54.8
2000	535	71.0	56.8	49.2	76.1	63.6	56.3
2001	763	73.9	55.8	76.5	59.2
2002	734	73.4	75.3

*2004-05 Board of Governors' Award for
Excellence in Teaching
Dr. Marvin Curtis*

*2004-05 Teacher of the Year Award
Ms. Sondra Martin*

*2004-05 Staff Employee of the Year
Ms. Matte McLaurin*

Faculty & Staff



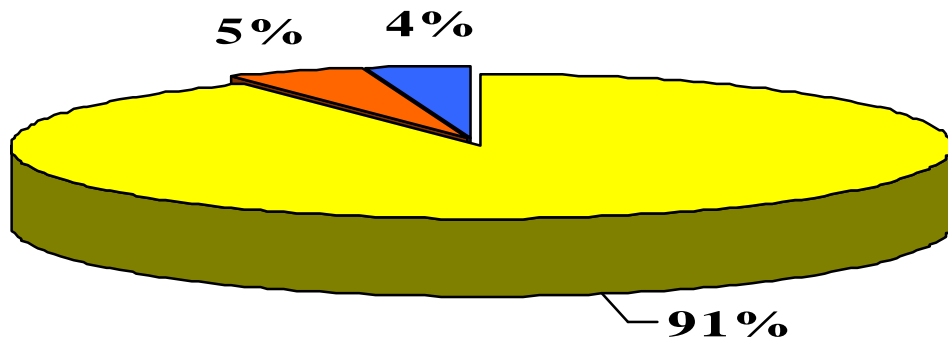
Narrative Summary of Faculty and Staff Data

All Personnel: Fayetteville State employed 763 individuals as of October 1, 2003. Of this number, 219 (29%) were faculty and the remaining 544 were administrative and support staff. Approximately 88% are permanent (full-time) employees, and about 33% are full and part time instructional employees. Eighteen percent of employees were white and 54% were women.

Faculty: The total number of full-time faculty employed as of October 1, 2003 was 219, an increase of 4.8% over last year. Of this number, 41% had tenure, while 32% were on the tenure track. Fifty-four percent of faculty members were female. With respect to race distribution of faculty, 57% was Black. The assistant professors represent the majority of faculty members, while less than 1% were classified as an instructors. One-hundred and fifty faculty members had obtained doctoral or first professional degrees. The average salary of a full-time faculty member was \$57,382.

Fall 2003 Faculty Full-time Only By Citizenship

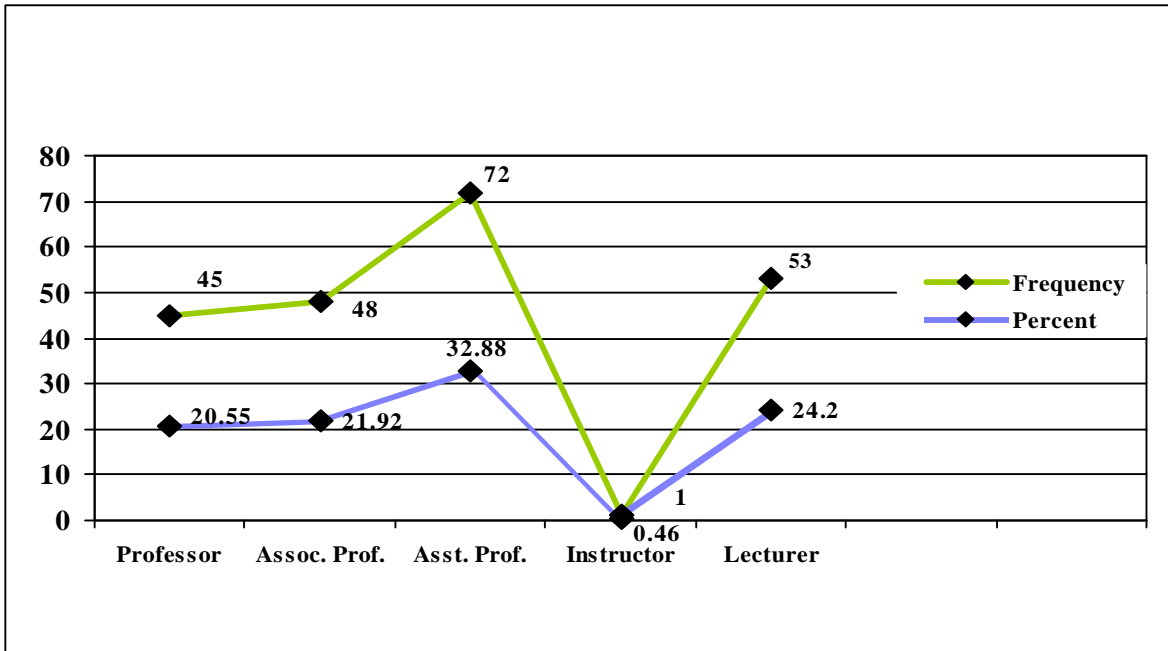
Resident	Frequency	Percent	Cumulative Frequency	Cumulative Percent
Citizen	201	91.78%	201	91.78%
Non Resident Alien	10	4.57%	211	96.35%
Resident Alien	8	3.65%	219	100.00%
Total	219	100.00%	219	100.00%



Citizen
 NR Alien
 Resident Alien

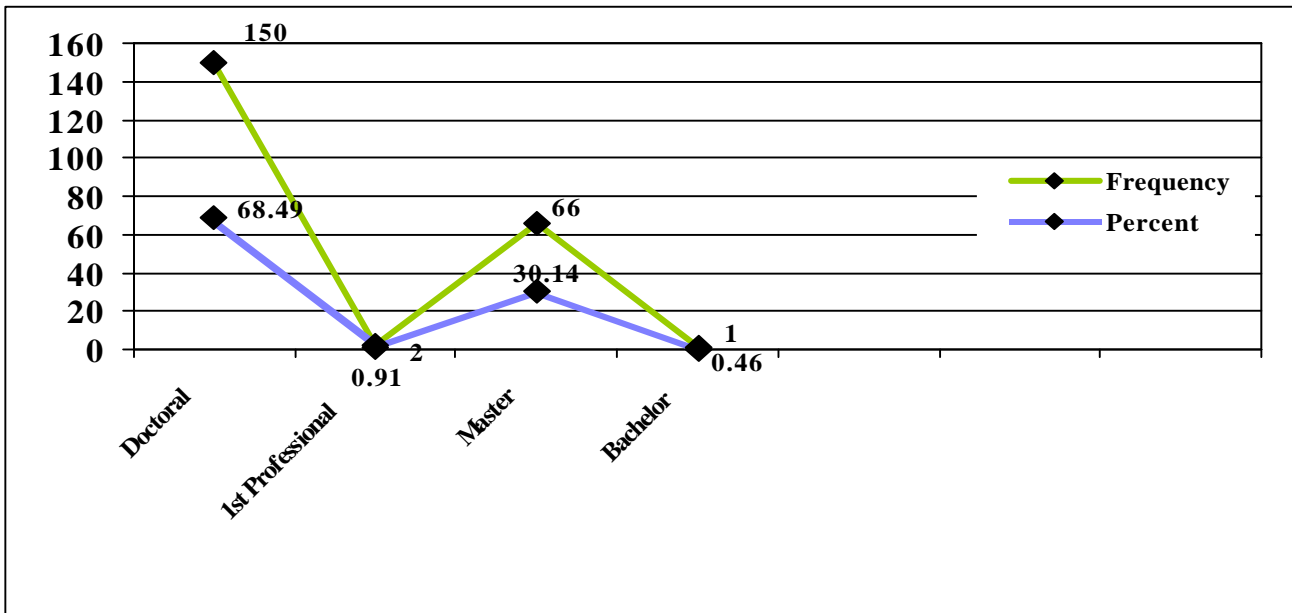
Fall 2003 Full-time Faculty Only By Rank

Rank	Frequency	Percent	Cumulative Frequency	Cumulative Percent
Professor	45	20.55%	45	20.55%
Assoc. Prof.	48	21.92%	93	42.47%
Asst. Prof.	72	32.88%	165	75.34%
Instructor	1	0.46%	166	75.80%
Lecturer	53	24.20%	219	100.00%
Total	219	100.00%	219	100.00%



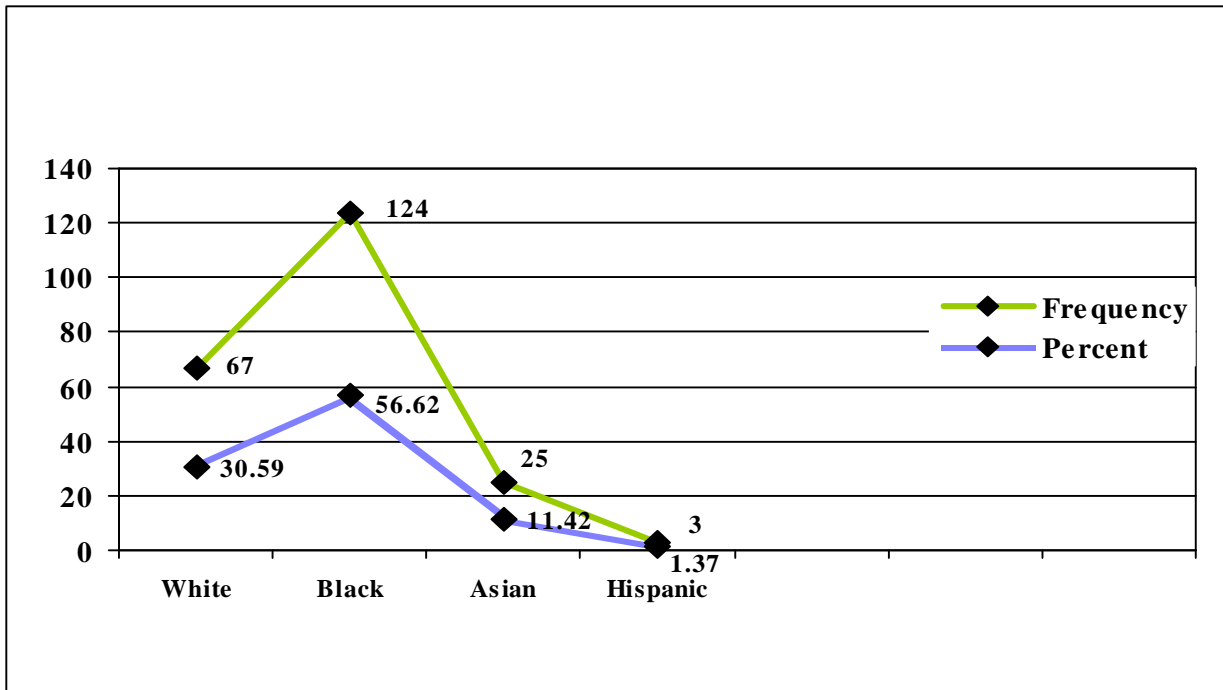
Fall 2003 Full-time Faculty Only By Degree

Degree	Frequency	Percent	Cumulative	Cumulative
Doctoral	150	68.49%	150	68.49%
First Professional	2	0.91%	152	69.41%
Master	66	30.14%	218	99.54%
Bachelor	1	0.46%	219	100.00%
Total	219	100.00%	219	100.00%



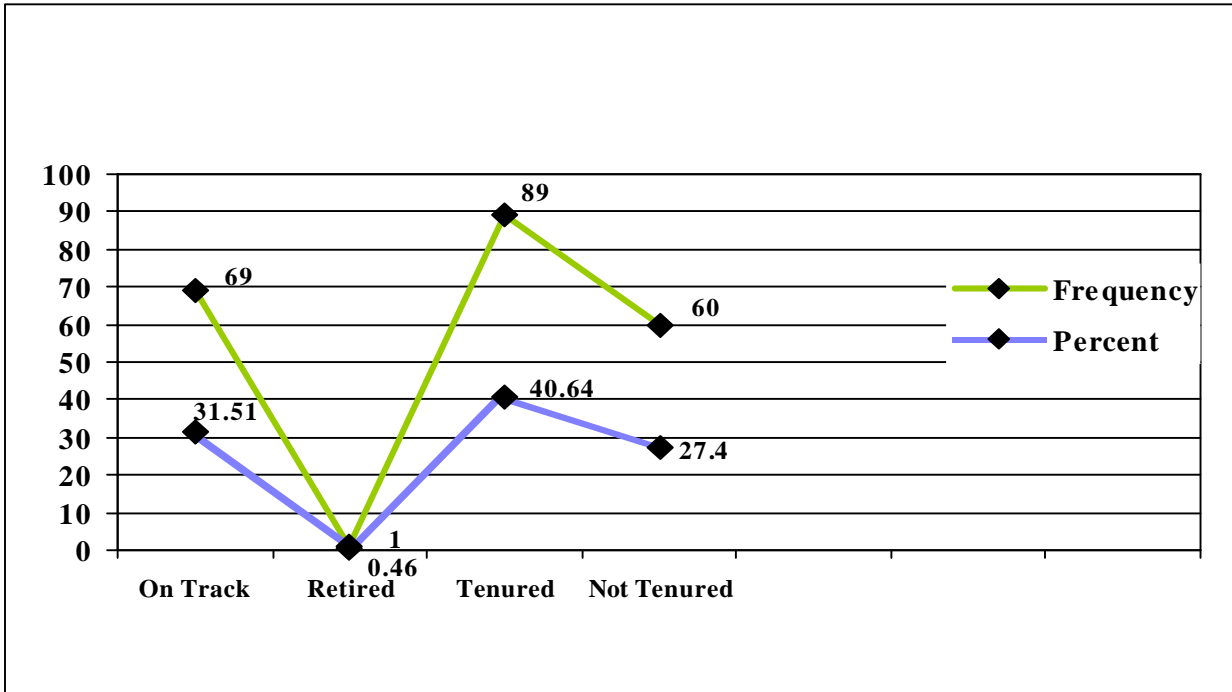
Fall 2003 Full-time Faculty Only By Ethnicity

Race	Frequency	Percent	Cumulative Frequency	Cumulative Percent
White	67	30.59%	67	30.59%
Black	124	56.62%	191	87.21%
Asian	25	11.42%	216	98.63%
Hispanic	3	1.37%	219	100.00%
Total	219	100.00%	219	100.00%



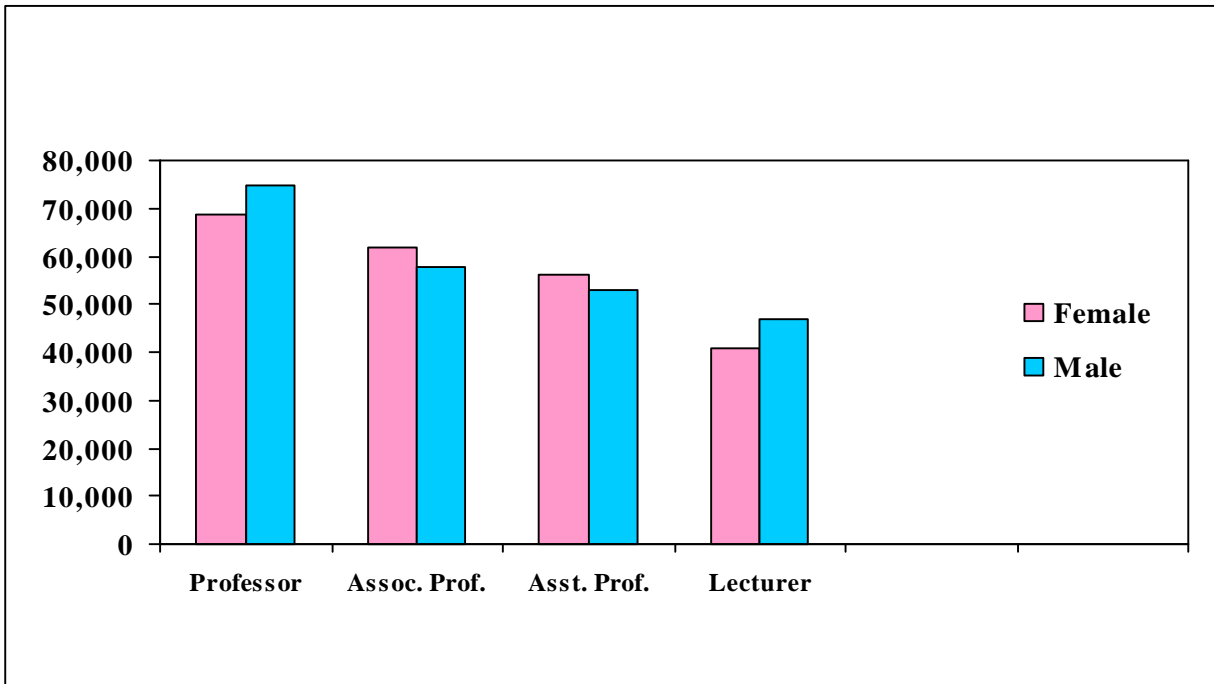
Fall 2003 Full-time Faculty Only By Tenure

Race	Frequency	Percent	Cumulative Frequency	Cumulative Percent
On Track	69	31.51%	69	31.51%
Retired	1	0.46%	70	31.96%
Tenured	89	40.64%	159	72.60%
Not Tenured	60	27.40%	219	100.00%
Total	219	100.00%	219	100.00%



Fall 2003 Full-time Average Faculty By Rank

Rank	Male	Female	Total
Professor	\$74,825.00	\$68,540.00	\$73,111.00
Assoc.	\$57,691.00	\$61,861.00	\$58,820.00
Asst. Profess	\$52,941.00	\$56,009.00	\$54,283.00
Instructor	***	***	***
Lecturer	\$46,709.00	\$40,827.00	\$43,315.00



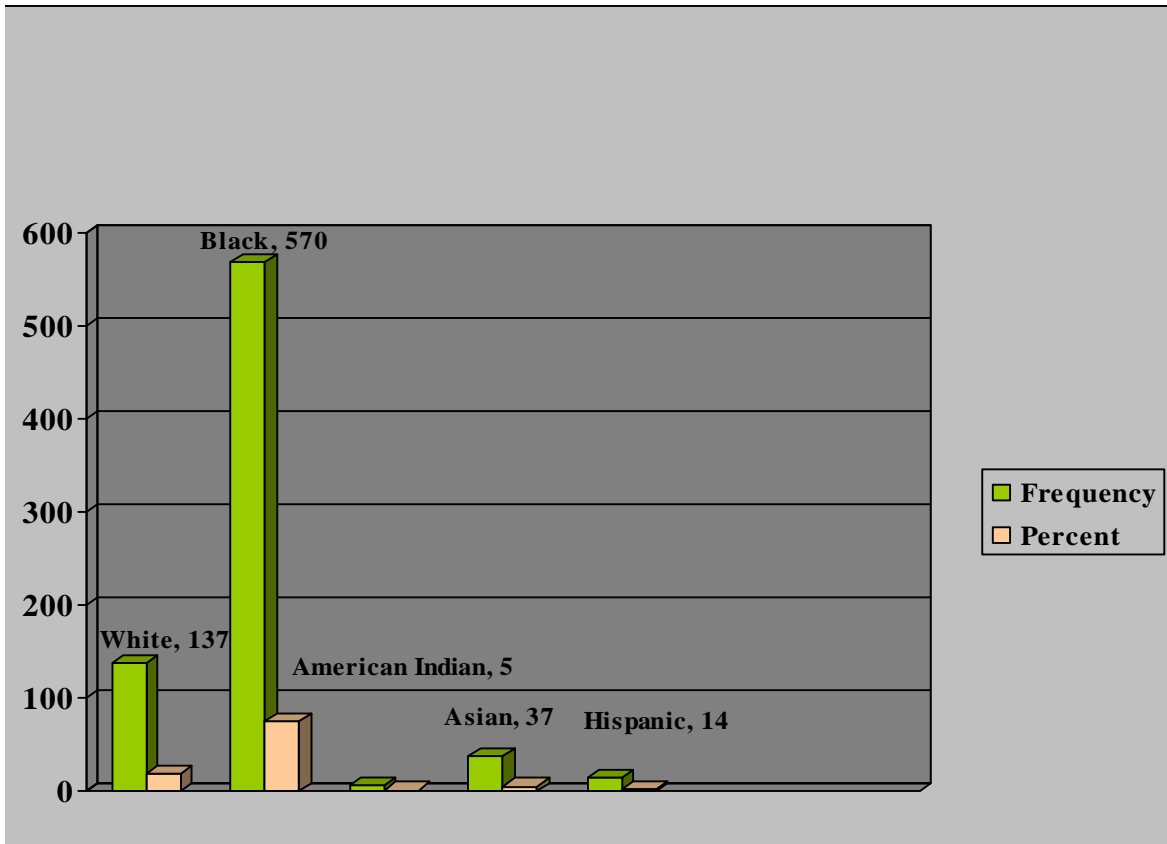
Note: Faculty Information current as October 1, 2003

*** Only one faculty in this category

Fall 2003 Employees By Ethnicity

(full-time and part-time)

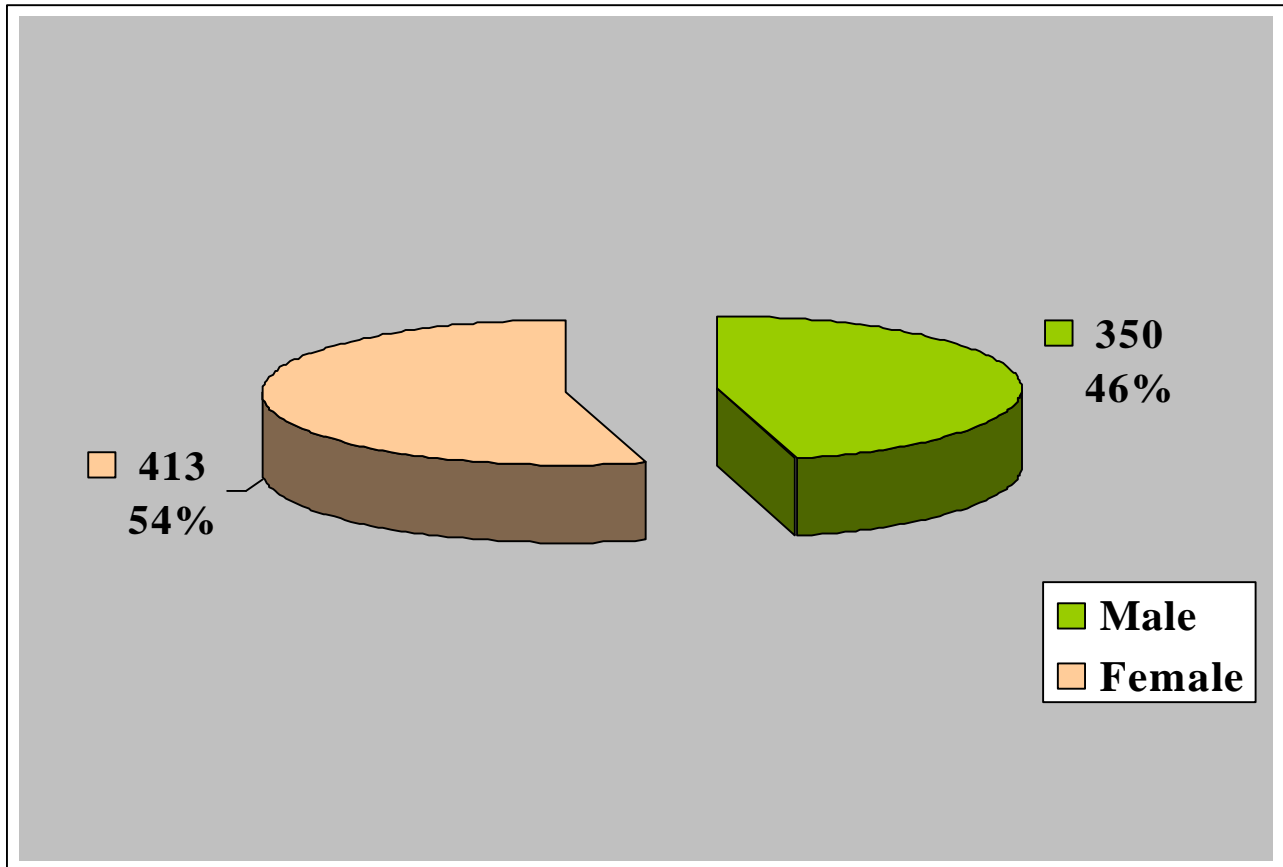
Race	Frequency	Percent	Cumulative Frequency	Cumulative Percent
White	137	17.96	137	17.96
Black	570	74.71	707	92.66
American Indian	5	0.66	712	93.32
Asian	37	4.85	749	98.17
Hispanic	14	1.83	763	100.00



Fall 2003 Employees By Gender

(full-time and part-time)

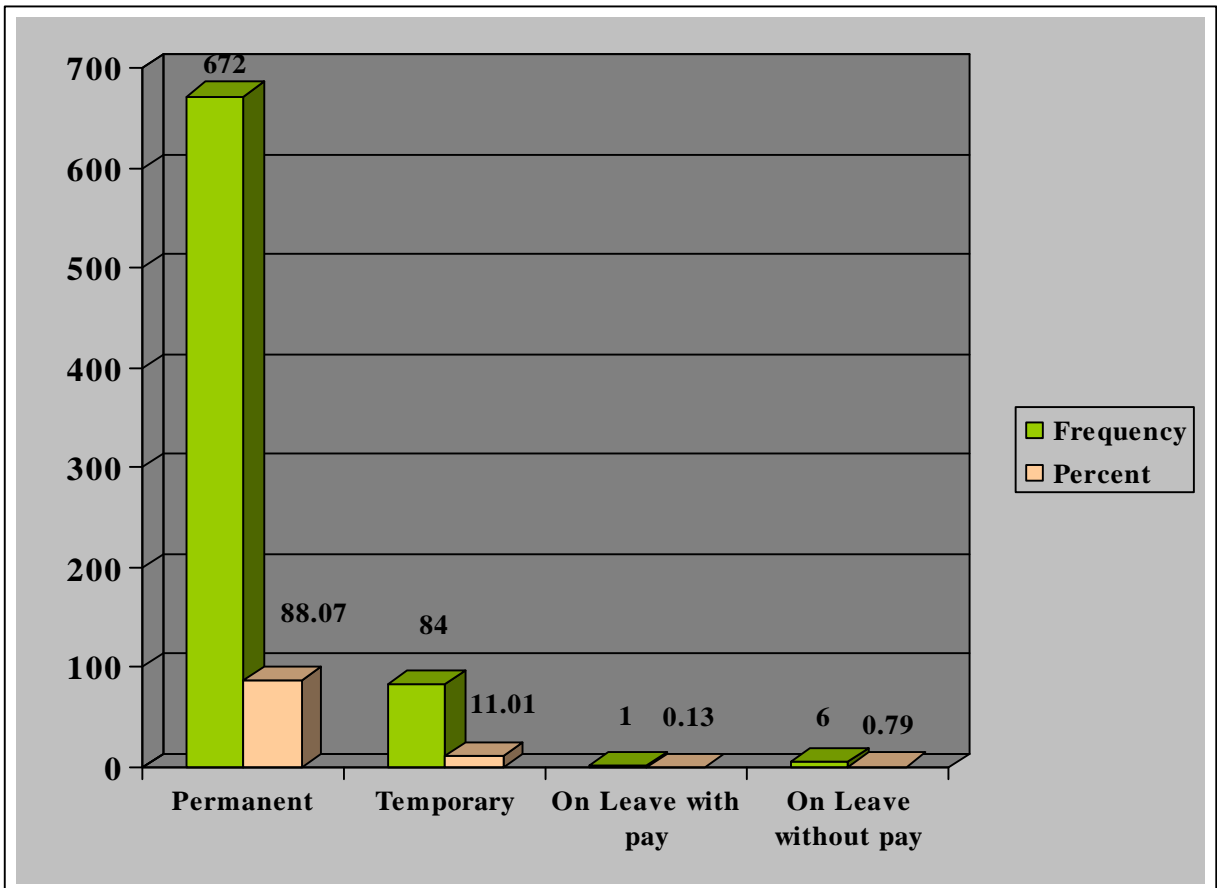
Sex	Frequency	Percent	Cumulative Frequency	Cumulative Percent
Female	413	54.13	413	54.13
Male	350	45.87	763	100



Fall 2003 Employees By Status

(full-time and part-time)

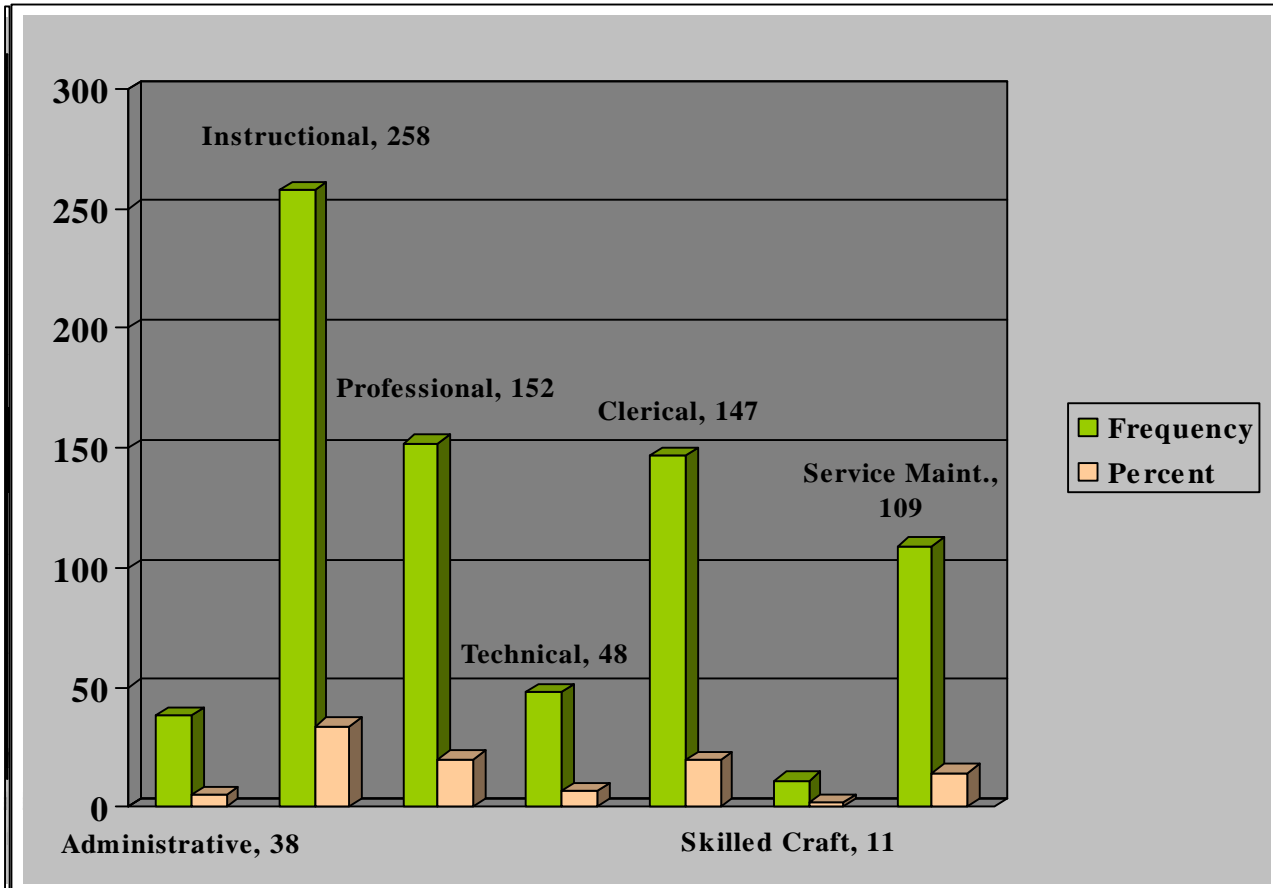
Status	Frequency	Percent	Cumulative Frequency	Cumulative Percent
Permanent	672	88.07	672	88.07
Temporary	84	11.01	756	99.08
On Leave with pay	1	0.13	757	99.21
On Leave without pay	6	0.79	763	100.00



Fall 2003 Employees By Classification

(full-time and part-time)

Class type	Frequency	Percent	Cumulative Frequency	Cumulative Percent
Administrative	38	4.98	38	4.98
Instructional	258	33.81	296	38.79
Professional	152	19.92	448	58.72
Technical	48	6.29	496	65.01
Clerical	147	19.27	643	84.27
Skilled Crafts	11	1.44	654	85.71
Service/Maint.	109	14.29	763	100.00



Finances

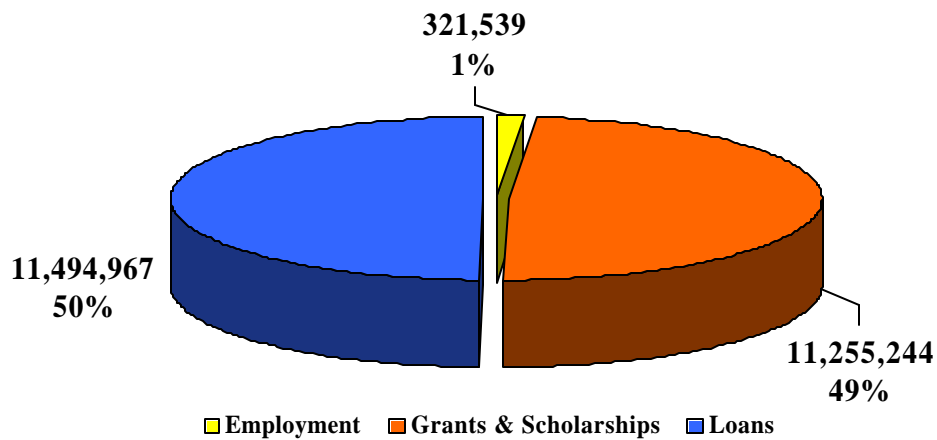


Narrative Summary of Financial Data

Student Financial Aid: For the 2002-2003 academic years, 3,591 students received over 24.5 million dollars in aid. Of those receiving aid, six percent were graduate students, with less than 1% of their source of aid being employment, grants, and/or scholarships. For undergraduates, forty-eight percent of the funds were received through grants and scholarships, while 45% received their source of aid through loans. These two sources provided for 93% of the financial aid received by 3,370 undergraduate students.

2002-2003 Student Financial Aid By Aid Type

Financial Aid Type	# of Students*	Amount Received
Employment	424	\$321,539
Grants & Scholarships	2,849	\$11,255,244
Loans	2,547	\$11,494,967
Total	5,820	\$23,071,750



*Duplicated Student Count

**Fayetteville State University
IPEDS Finance Survey
Fiscal Year 2003**

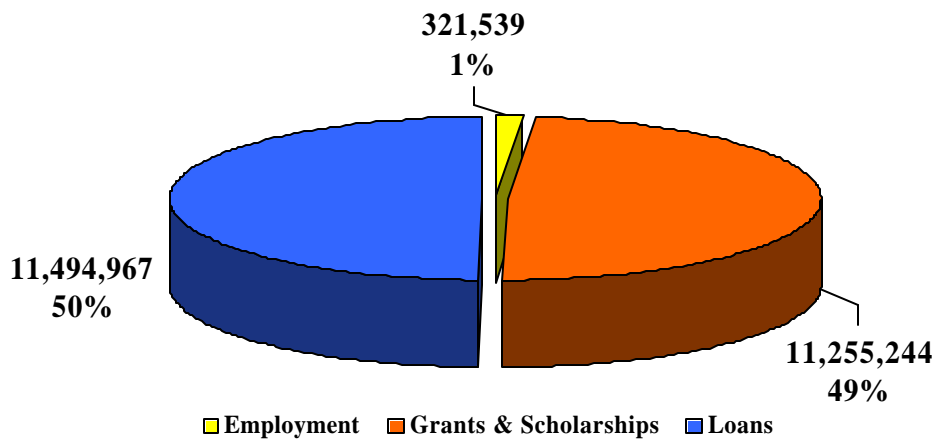
Line Number	Revenues and other Additions	Current Year Amount
	Operating Revenue	
01	Tuition & Fees, after deducting discounts and allowances	9,077,519
	<i>Grants & contracts - operating:</i>	
02	Federal operating grants & contracts	1,511,427
03	State operating grants & contracts	69,445
04	Local/private operating grants & contracts	10,000
05	Sales & services of auxiliary enterprises after deducting discounts & allowances	4,065,357
06	Sales & services of hospitals, after deducting discounts and allowances	0
07	Independent Operations	0
08	Other Sources	258,207
09	Total operating revenues	14,991,955
	Non-Operating Revenues	
10	Federal appropriations	0
11	State appropriations	31,797,116
12	Local appropriations, education district taxes	0
	<i>Grants - non-operating</i>	
13	Federal non-operating grants	15,126,645
14	State non-operating grants	683,674
15	Local non-operating grants	85,158
16	Gifts, including contributions from affiliated organizations	407,675
17	Investment income	701,207
18	Other non-operating revenues	0
19	Total non-operating revenues	48,801,475
	Other Revenues and additions	
20	Capital appropriations	0
21	Capital grants and gifts	4,784,478
22	Additions to permanent endowments	35,321
23	Other revenues and additions	0
24	Total other revenues and additions	4,819,799
25	Total all revenues and other additions	68,613,229
	Expenses and other Deductions	
	Operating Expenses	
01	Instruction	20,446,291
02	Research	579,174
03	Public service	3,927,722
05	Academic support	6,971,846
06	Student services	2,626,987
07	Institutional Support	6,911,794
08	Operation and maintenance of plant	7,299,003
09	Depreciation	1,789,678
10	Scholarships and fellowships expenses, excluding discounts and allowances	4,794,744
11	Auxiliary enterprises	8,234,264
12	Hospital services	0
13	Independent operations	0
14	Other expenses and deductions	0
15	Total operating expenses	63,581,503
	Non-Operating Expenses and Deductions	
16	Interest	442,718
17	Other non-operating expenses and deductions	0
18	Total non-operating expenses and deductions	442,718
19	Total expenses and deductions	64,024,221

**Fayetteville State University
IPEDS Finance Survey
Fiscal Year 2003**

Line Number	Revenues and other Additions	Current Year Amount
	Operating Revenue	
01	Tuition & Fees, after deducting discounts and allowances	9,077,519
	<i>Grants & contracts - operating:</i>	
02	Federal operating grants & contracts	1,511,427
03	State operating grants & contracts	69,445
04	Local/private operating grants & contracts	10,000
05	Sales & services of auxiliary enterprises after deducting discounts & allowances	4,065,357
06	Sales & services of hospitals, after deducting discounts and allowances	0
07	Independent Operations	0
08	Other Sources	258,207
09	Total operating revenues	14,991,955
	Non-Operating Revenues	
10	Federal appropriations	0
11	State appropriations	31,797,116
12	Local appropriations, education district taxes	0
	<i>Grants - non-operating</i>	
13	Federal non-operating grants	15,126,645
14	State non-operating grants	683,674
15	Local non-operating grants	85,158
16	Gifts, including contributions from affiliated organizations	407,675
17	Investment income	701,207
18	Other non-operating revenues	0
19	Total non-operating revenues	48,801,475
	Other Revenues and additions	
20	Capital appropriations	0
21	Capital grants and gifts	4,784,478
22	Additions to permanent endowments	35,321
23	Other revenues and additions	0
24	Total other revenues and additions	4,819,799
25	Total all revenues and other additions	68,613,229
	Expenses and other Deductions	
	Operating Expenses	
01	Instruction	20,446,291
02	Research	579,174
03	Public service	3,927,722
05	Academic support	6,971,846
06	Student services	2,626,987
07	Institutional Support	6,911,794
08	Operation and maintenance of plant	7,299,003
09	Depreciation	1,789,678
10	Scholarships and fellowships expenses, excluding discounts and allowances	4,794,744
11	Auxiliary enterprises	8,234,264
12	Hospital services	0
13	Independent operations	0
14	Other expenses and deductions	0
15	Total operating expenses	63,581,503
	Non-Operating Expenses and Deductions	
16	Interest	442,718
17	Other non-operating expenses and deductions	0
18	Total non-operating expenses and deductions	442,718
19	Total expenses and deductions	64,024,221

2002-2003 Student Financial Aid By Aid Type

Financial Aid Type	# of Students*	Amount Received
Employment	424	\$321,539
Grants & Scholarships	2,849	\$11,255,244
Loans	2,547	\$11,494,967
Total	5,820	\$23,071,750



*Duplicated Student Count

**2002-2003 Financial Aid
By Type and Level**

	Undergraduate		Graduate		Total	
	# of Students	Amt. Received	# of Students	Amt. Received	# of Students	Amt. Received
Employment						
04 College Work Study	423	320,979	1	560	424	321,539
87 Campus Job	0	0	.	.	0	0
Employment Total (undup. Studs.)	423	320,979	1	560	424	321,539
Grants and Scholarships						
86 Athletic grant-in-aid	79	320,315	1	447	80	320,762
02 Supplemental Grant (SEOG)	1,147	797,376	.	.	1,147	797,376
03 Student Incentive Grant (NCSSIG)	182	104,072	.	.	182	104,072
01 Pell Grant	2,314	6,829,228	.	.	2,314	6,829,228
Other Grants and Scholarships						
12 HPEAA Grant	0	0	.	.	0	0
16 ROTC	15	43,745	3	6,815	18	50,560
41 Freshmen Scholars Program	61	161,702	.	.	61	161,702
42 Incentive Scholars Program	123	227,164	.	.	123	227,164
43 Incentive Scholarships for Native Americans	1	1,500	.	.	1	1,500
45 Minority Presence Scholarship General Program	33	68,310	.	.	33	68,310
49 NC Division of Vocational Rehabilitation	128	368,862	8	16,392	136	385,254
53 NC Veterans Scholarship	18	69,455	2	2,650	20	72,105
57 Prospective Teacher Scholarship Loan	1	2,500	.	.	1	2,500
79 Other North Carolina State Program	18	18,000	.	.	18	18,000
80 Foundation-awarded grant/scholarship (non-athletic)	351	1,517,060	1	529	352	1,517,589
82 Externally administered private grant/scholarship	228	525,458	5	14,646	233	540,104
88 Tuition Waivers	75	88,515	25	37,503	100	126,018
99 Other non-federal, non-state program	35	33,000	.	.	35	33,000
Other G/S Total (undup. Studs.)	941	3,125,271	44	78,535	985	3,203,806
Grants and Scholarships Total (undup. Studs.)	2,804	11,176,262	45	78,982	2,849	11,255,244
Loans						
05 Perkins Loans	286	732,566	.	.	286	732,566
Stafford Loans						
06 FFELP - Subsidized Stafford PLUS Loans	0	0	.	.	0	0
08 FFELP - PLUS	0	0	.	.	0	0
11 FDLP - PLUS	262	1,118,701	.	.	262	1,118,701
PLUS Loans Total (undup. Studs.)	262	1,118,701	.	.	262	1,118,701
FDSL						
09 FDLP - Subsidized Stafford	2,084	5,950,646	150	743,265	2,234	6,693,911
10 FDLP - Unsubsidized Stafford	961	2,591,193	89	342,113	1,050	2,933,306
FDSL Total (undup. Studs.)	2,345	8,541,839	171	1,085,378	2,516	9,627,217
Other Loans						
81 Foundation-awarded loan (non-athletic)	0	0	.	.	0	0
83 Externally administered private loan	3	16,483	.	.	3	16,483
Other Loans Total (undup. Studs.)	3	16,483	.	.	3	16,483
Loans Total (undup. Studs.)	2,376	10,409,589	171	1,085,378	2,547	11,494,967
All Categories Total (undup. Studs.)	3,370	23,341,302	221	1,240,895	3,591	24,582,197

ESTIMATED FEE SHEET FALL 2003/SPRING 2004

As of July 21, 2003

Undergraduate		Semester Cost				
Credit hours taken		1-5	6-8	9-11	12+	Yearly
	In State Tuition	165.13	330.25	495.38	660.50	1,321.00
	Out of State Tuition	1,335.25	2,670.50	4,005.75	5,341.00	10,682.00
Fees						
	Athletic	34.12	68.25	102.37	136.50	273.00
	Health	11.50	23.00	34.50	46.00	92.00
	Student Activities	38.75	77.50	116.25	155.00	310.00
	Sub-Total General and Other Fees	84.37	168.75	253.12	337.50	675.00
	Student Government Assoc. Fee	0.12	0.25	0.38	0.50	1.00
	Education and Technology Fee	18.00	36.00	54.00	72.50	145.00
	Indebtness Fee	11.88	23.75	35.62	47.50	95.00
	Book Rental	20.00	40.00	60.00	80.00	160.00
	Student Medical Insurance	131.00	131.00	131.00	131.00	262.00
	Sub-Total Fees	181.00	231.00	281.00	331.50	663.00
Total Tuition and Fees						
	In State	430.50	730.00	1,029.50	1,329.50	2,659.00
	Out of State	1,600.62	3,070.25	4,539.87	6,010.00	12,020.00
21 Meal Plan						
		850.00	850.00	850.00	850.00	1,700.00
Regular Style Room						
		1,060.00	1,060.00	1,060.00	1,060.00	2,120.00
Total Charges/Boarder						
	In State	2,340.00	2,640.00	2,939.50	3,239.50	6,479.00
	Out of State	3,510.62	4,980.25	6,449.87	7,920.00	15,840.00

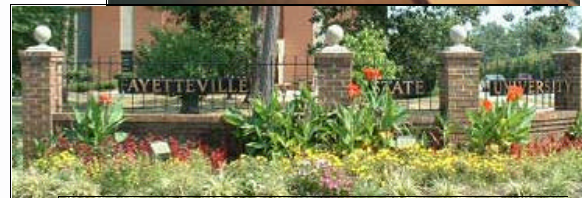
Graduate		Semester Cost				
Credit hours taken		1-2	3-5	6-8	9+	Yearly
In State Tuition		174.13	348.25	522.38	696.50	1,393.00
Out of State Tuition		1,363.50	2,757.00	4,090.50	5,454.00	10,908.00
Fees						
Athletic		34.12	68.25	102.37	136.50	273.00
Health		11.50	23.00	34.50	46.00	92.00
Student Activities		38.75	77.50	116.25	155.00	310.00
Sub-Total General and Other Fees		84.37	168.75	253.12	337.50	675.00
Education and Technology Fee		18.13	36.00	54.38	72.50	145.00
Student Government Assoc. Fee		0.12	0.25	0.38	0.50	1.00
Indebtness Fee		11.88	23.75	35.62	47.50	95.00
Sub-Total Fees		30.13	60.00	90.38	120.50	241.00
Total Tuition and Fees						
In State		288.63	577.00	865.88	1154.50	2309.00
Out of State		1478.00	2985.75	4434.00	5912.00	11824.00
These fees are subject to change by the N.C. General Assembly, by the UNC Board of Governors or Fayetteville State University. Notification of any changes will be published as soon as possible.						

Fayetteville State University

On November 7, 2000 North Carolina voters overwhelmingly supported the \$3.1-billion Higher Education Improvement Bonds. This historic investment will allow the 16-campus University of North Carolina and the 59 community college campuses to continue to provide the highest educational and economic opportunities for our citizens. The voters of North Carolina delivered an unmistakable expression of their values and priorities for the future. We are grateful for that support.

The infrastructure of the university will continue to change as the bond projects are completed through 2006.
(p.59)

Facilities



Narrative Summary of Facilities Data

Facilities Inventory: Fayetteville State University campus holds approximately 47 buildings, with the earliest built in 1922 and the latest, the Honor's Dorm, in 1997. The average gross area for each building is 22,407 square feet, and the average construction costs of \$981,508.

The utilization report indicated that campus classroom space was utilized 54,760 student clock hours; labs, 10,778 student clock hours; and other spaces, 5,232 student clock hours during the fall 2003 semester. A total of 139 rooms were used in 13 buildings.

Bond Project: On November 7, 2000, North Carolina voters supported the \$3.1-billion Higher Education Improvement Bonds. The infrastructure of the university will continue to change as the bond projects are completed through 2006.

Facilities Inventory

Bldg. No	Name	Year Constr.	Gross Area	Bldg. Cost
A	Cottage A	1922	3,375	\$13,000
11	Cook Dining Hall	1923	18,267	\$93,000
7	Joyner Hall Dorm	1930	18,984	\$57,000
14	Communication Center	1937	12,582	\$36,000
2	Lilly Gymnasium	1938	32,867	\$317,000
10	Harris Hall Dorm	1938	26,688	\$71,000
6	Taylor Social Sciences	1939	20,901	\$122,000
18	Hood Hall Dorm	1939	17,516	\$57,000
31	Security Building	1951	2,800	\$23,090
4	Seabrook Auditorium	1953	21,777	\$289,000
12	Smith Hall Dorm	1953	20,604	\$230,000
3B	Mitchell Pre-School	1955	3,304	\$50,000
13	Spaulding Infirmary	1955	6,020	\$104,000
17	Williams Hall	1955	11,488	\$128,000
15B	Newbold Training	1958	4,417	\$88,000
<hr/>				
1	Rosenthal	1966	26,353	\$397,245
9	Bryant Dorm	1966	40,662	\$607,000
16	Vance Dorm	1966	55,917	\$773,000
6A	Science Annex	1968	20,417	\$524,000
19	Helen T. Chick Bldg.	1968	34,077	\$887,000
2A	Womens Phys Ed. Bldg.	1969	31,940	\$618,000
20	Maintenance Bldg.	1969	8,200	\$82,000
23	Storage Bldg.	1969	720	\$4,000
21	WM C Collins Admin.	1970	17,346	\$475,000
22	Rudolph Jones Student Ctr.	1972	29,653	\$900,000
24	Maint. Stor Shed	1974	3,000	\$41,744
25	Cont. Educ. Center	1976	9,545	\$265,000
26	New Dorm Co-ed	1976	51,670	\$1,580,000
27	Butler Learning Center	1976	75,418	\$2,503,000
28	Chancellors Res	1976	5,925	\$135,000
35	Ticket Booth N & S	1978	122	\$1,000
40	Concession	1978	192	\$500
<hr/>				
34	Mitchell Storage	1980	96	\$450
38	New Bold Storage	1980	96	\$450
21A	C. J. Barber Admin.	1981	29,162	\$1,328,000
29	Charles A Lyon Science	1981	76,686	\$5,040,625
30	Central Warehouse	1982	10,945	\$383,920
32	Radio Transmit Bldg.	1982	220	\$5,154
001A	Kiln	1983	315	\$23,440
24A	Vehicle/General Storage	1983	3,600	\$44,080
33	Charles Chesnutt Library	1987	80,000	\$7,567,000
39	Concession	1987	120	\$6,200
27A	School of Business	1991	73,000	\$6,441,000
37	Restroom	1995	1,610	\$8,688
41	Health & Physical Ed	1995	106,234	\$9,700,000
36	Press Box	1997	800	\$630,700
42	Honors Dorm	1997	37,500	\$3,479,600

FAYETTEVILLE STATE UNIVERSITY
Bond Projects Updates – May 2004

Project	Status	Start (Bid)Date	Projected Completion Date
New Residence Hall \$5 – 6 million	Construction	05/03	04/05
Lyons Science Complex \$10 – 15 million	Design – CD	09/04	03/06
Knuckles Science Renovation \$1 – 2 million	Construction Documents	04/04	07/05
Continuing Education Renovation \$100000 – 250000	Construction	03/04	08/04
Chestnutt Library Renovation \$300000 – \$500000	Construction Design	12/03 (roof) 06/03 (HVAC) 11/04 (Interior)	07/04 Complete 05/05
Seabrook Auditorium Renovation \$5 – 7 million	Construction	05/03 (asbestos) 07/03 (renovation)	05/05
Taylor Gym Renovation \$2 – 3 million	Design – CD	07/04	12/05
Lilly Gym Renovation \$2 – 3 million	Design – SD/DD	01/05	07/06
Cook Hall Renovation \$1 – 2 million	Construction	06/03 (demo/asbestos) 11/03 (lower) 01/04 (upper)	Complete 07/04 11/04
Fire Safety Residence Halls \$400000 – 500000	Construction	01/03	Complete
Campus Infrastructure \$1 – 2 million	Construction	12/02	07/03 Phase 1 07/04 Phase 2
Collins Bldg Renovation	Planning		
Spaulding Infirmary Renovation	Construction	11/02	07/04
Taylor Science Renovation	Design - SD	03/05	12/05



Fayetteville State University
1200 Murchison Road
Fayetteville, North Carolina 28301-4298
910.672.1111
www.uncfsu.edu

Fayetteville State University is a member institution of The University of North Carolina, which is committed to equality of educational opportunity and does not discriminate against applicants, students, or employees based on race, color, national origin, religion, sex, age, or disability.